



TouchCore Family

Application Note #034 (AN034-V1.0)

AN

[TouchCore 1.0] How to Setting ITO Touch Screen

V1.0

July 2008

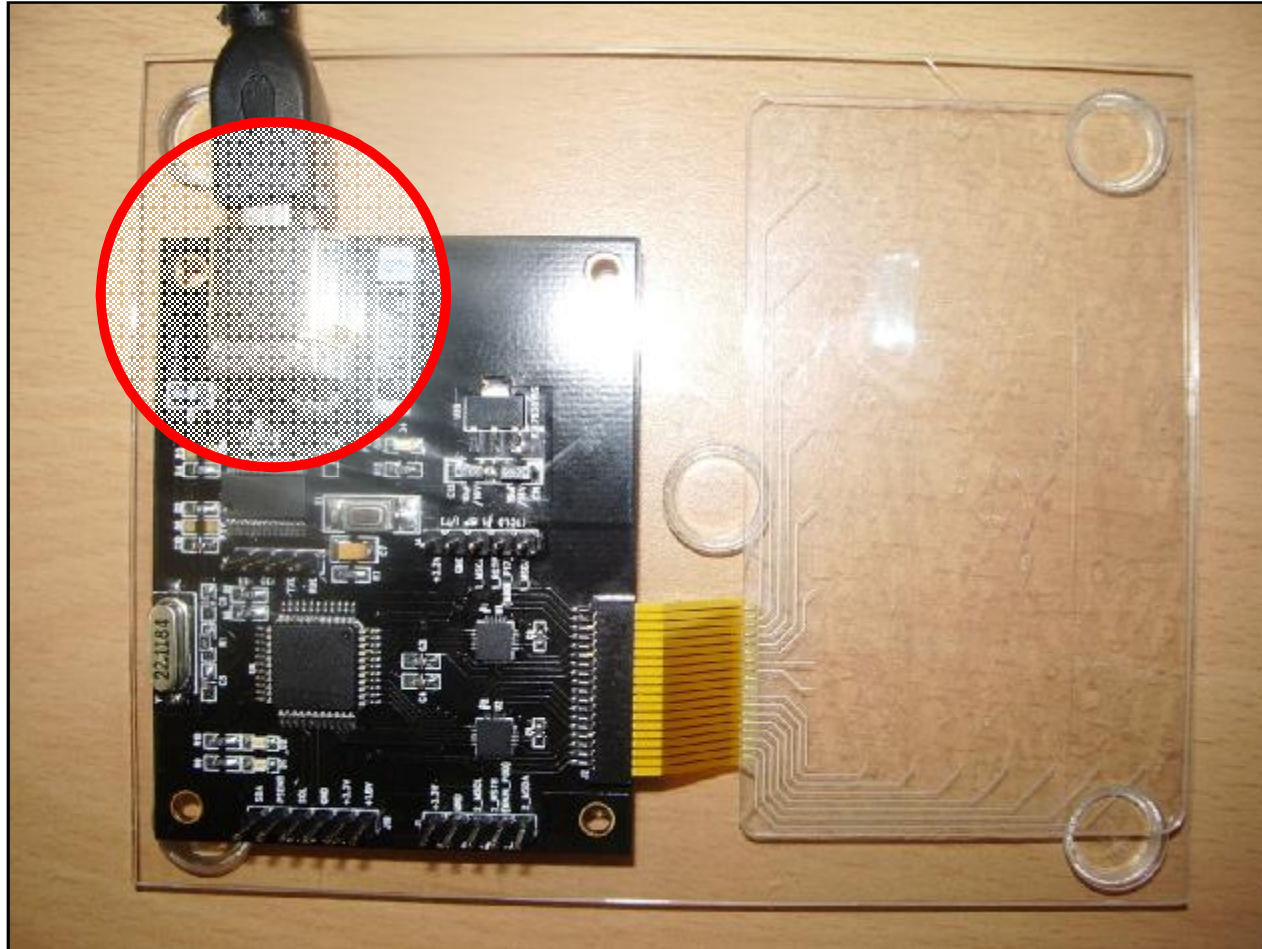
- ❑ CORERIVER Semiconductor reserves the right to make corrections, modifications, enhancements, improvements, and other changes to its products and services at any time.
- ❑ CORERIVER shall give customers at least a three month advance notice of intended discontinuation of a product or a service through its homepage.
- ❑ Customers should obtain the latest relevant information before placing orders and should verify that such information is current and complete.
- ❑ The CORERIVER products listed in this document are intended for usage in general electronics applications. These CORERIVER products are neither intended nor warranted for usage in equipment that requires extraordinarily high quality and/or reliability or a malfunction or failure of which may cause loss of human life or bodily injury..

Contents

1. How to Setting – ITO Touch Screen

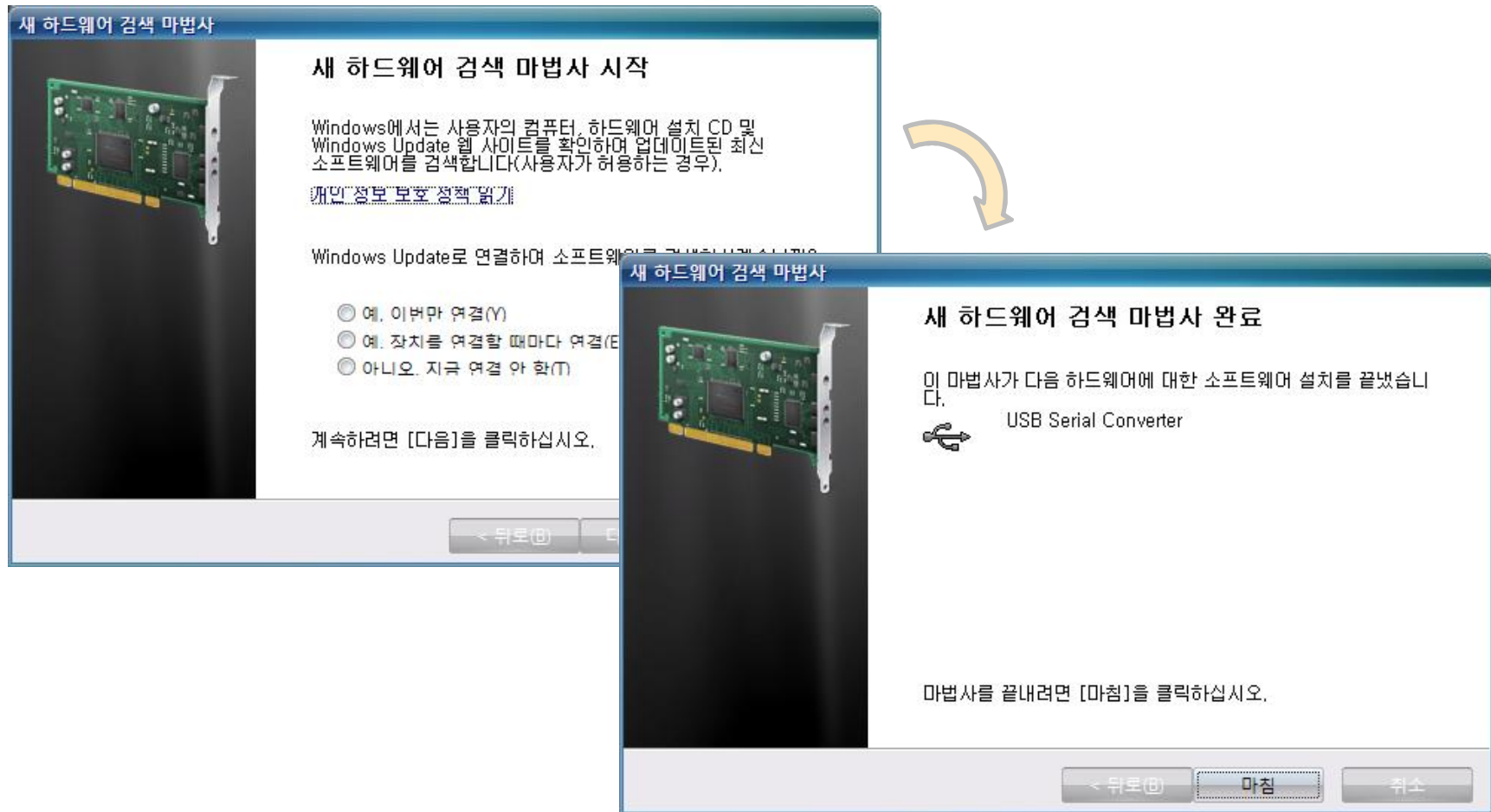
1. How to Setting – ITO Touch Screen

1. Connect the USB cable with your PC



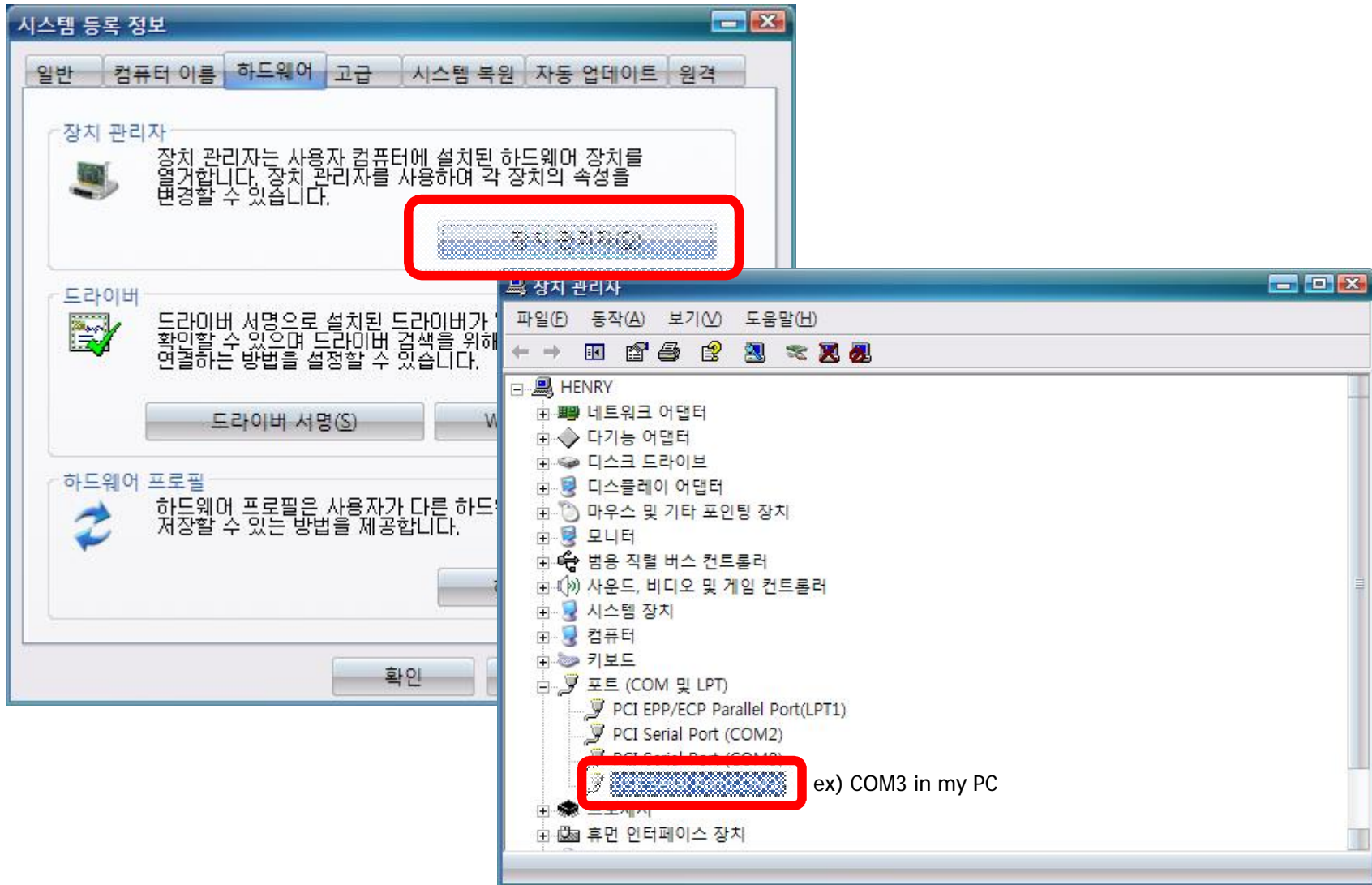
1. How to Setting – ITO Touch Screen

- 2. Your PC going to find the USB driver.
- 3. Install the USB driver. (Driver is in FTDI Folder (in compression file))



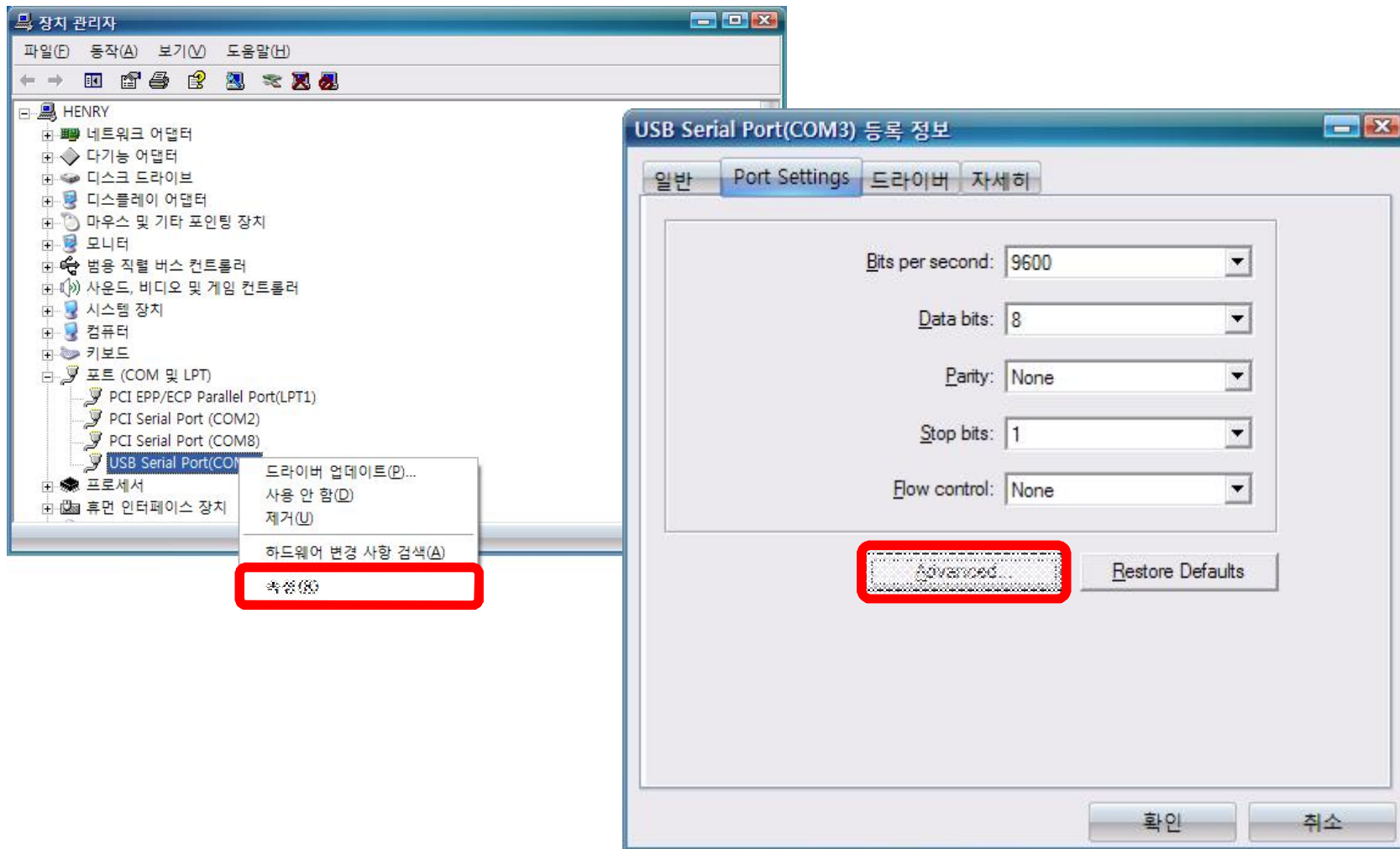
1. How to Setting – ITO Touch Screen

4. Check the your COM Port. (in Device manager)



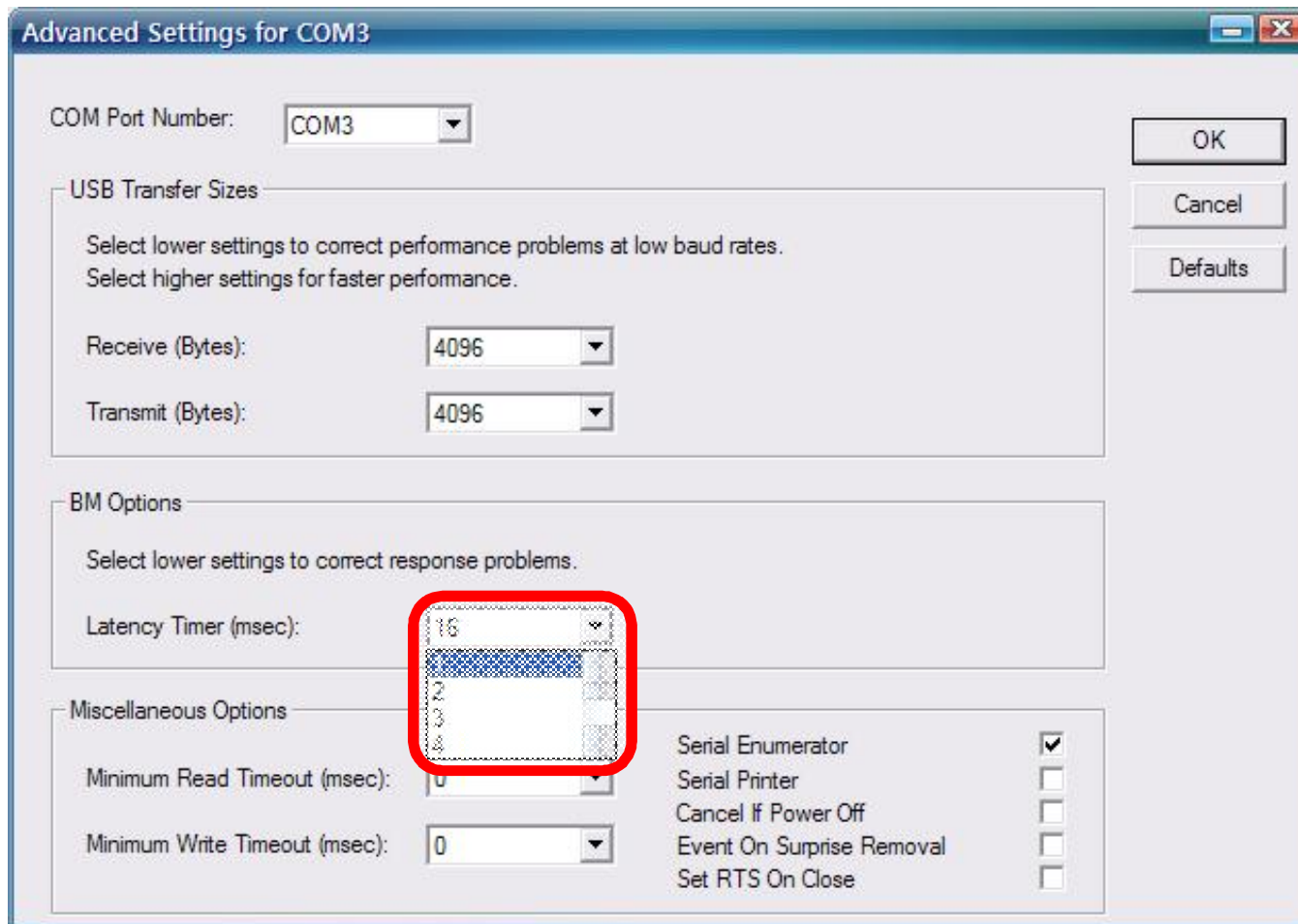
1. How to Setting – ITO Touch Screen

5. Enter the Properties.
6. Enter the Advanced in "Port Setting" tab



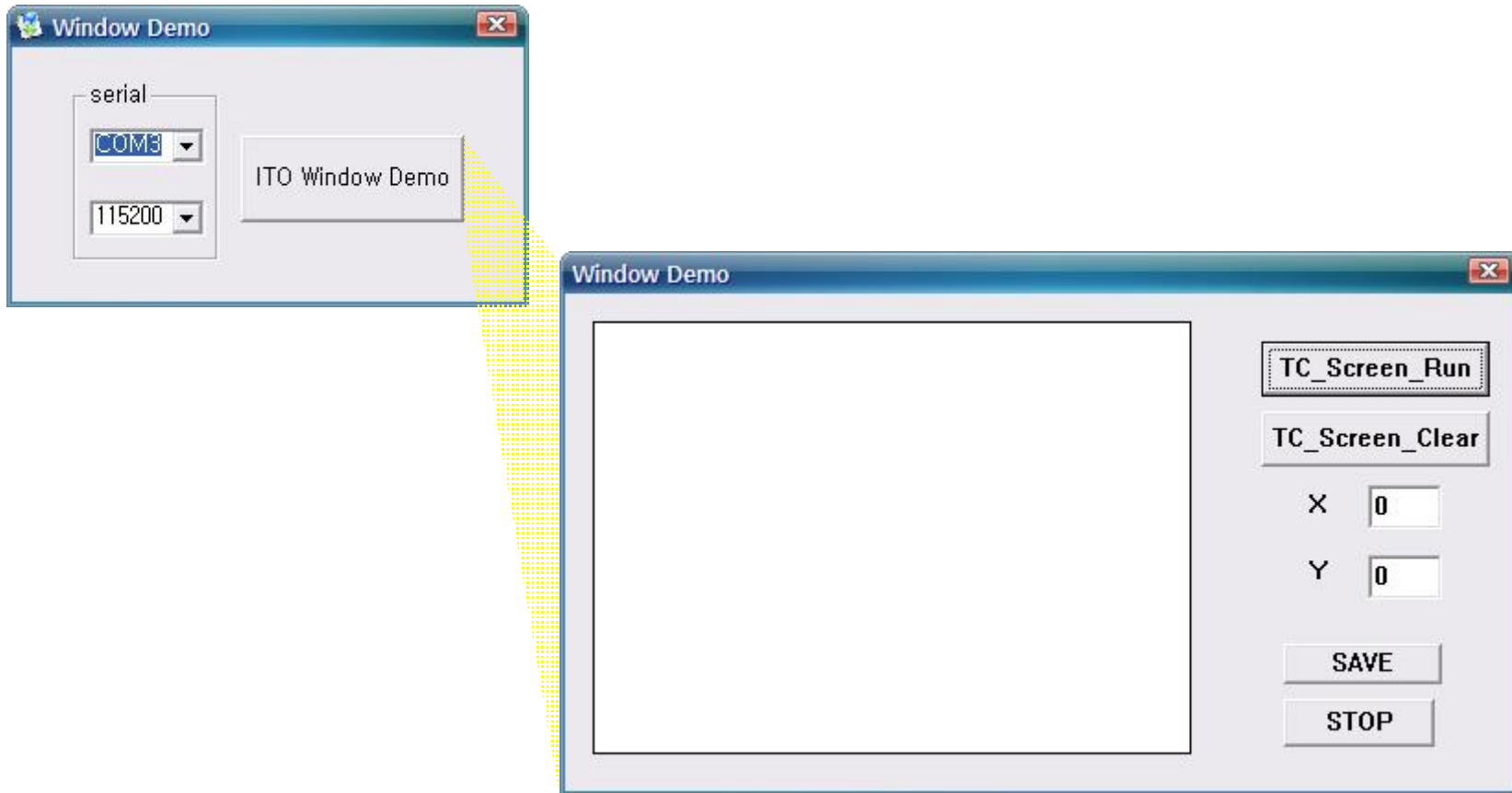
1. How to Setting – ITO Touch Screen

7. Setting the 'Latency Timer' to the minimum



1. How to Setting – ITO Touch Screen

8. Execute the ITO Window Demo (E2I_ITO_Window_V1.0_080709.exe)
9. Setting the COM Port with your PC
10. Setting the boadrate to 115200bps
11. Click the 'ITO Window Demo' button



1. How to Setting – ITO Touch Screen

12. Click the 'TC_Screen_Run'
13. Draw on the ITO.

