



TouchCore Family

Application Note #035 (AN035-V1.0)

AN

[TouchCore 1.0] How to Setting of TouchPAD Demo Board

V1.0

August 2008

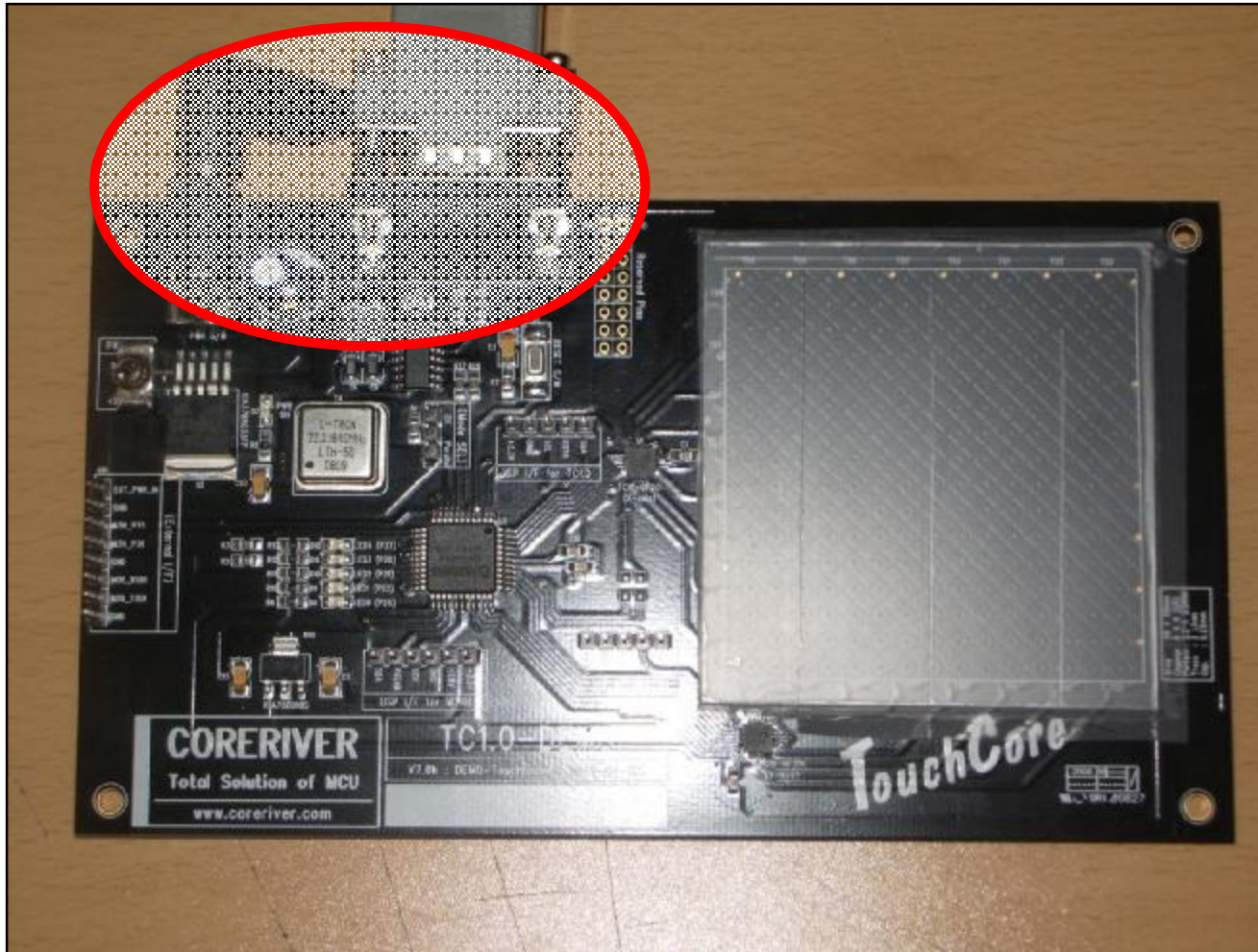
- ❑ CORERIVER Semiconductor reserves the right to make corrections, modifications, enhancements, improvements, and other changes to its products and services at any time.
- ❑ CORERIVER shall give customers at least a three month advance notice of intended discontinuation of a product or a service through its homepage.
- ❑ Customers should obtain the latest relevant information before placing orders and should verify that such information is current and complete.
- ❑ The CORERIVER products listed in this document are intended for usage in general electronics applications. These CORERIVER products are neither intended nor warranted for usage in equipment that requires extraordinarily high quality and/or reliability or a malfunction or failure of which may cause loss of human life or bodily injury..

Contents

1. How to Setting – TouchPAD Demo Board

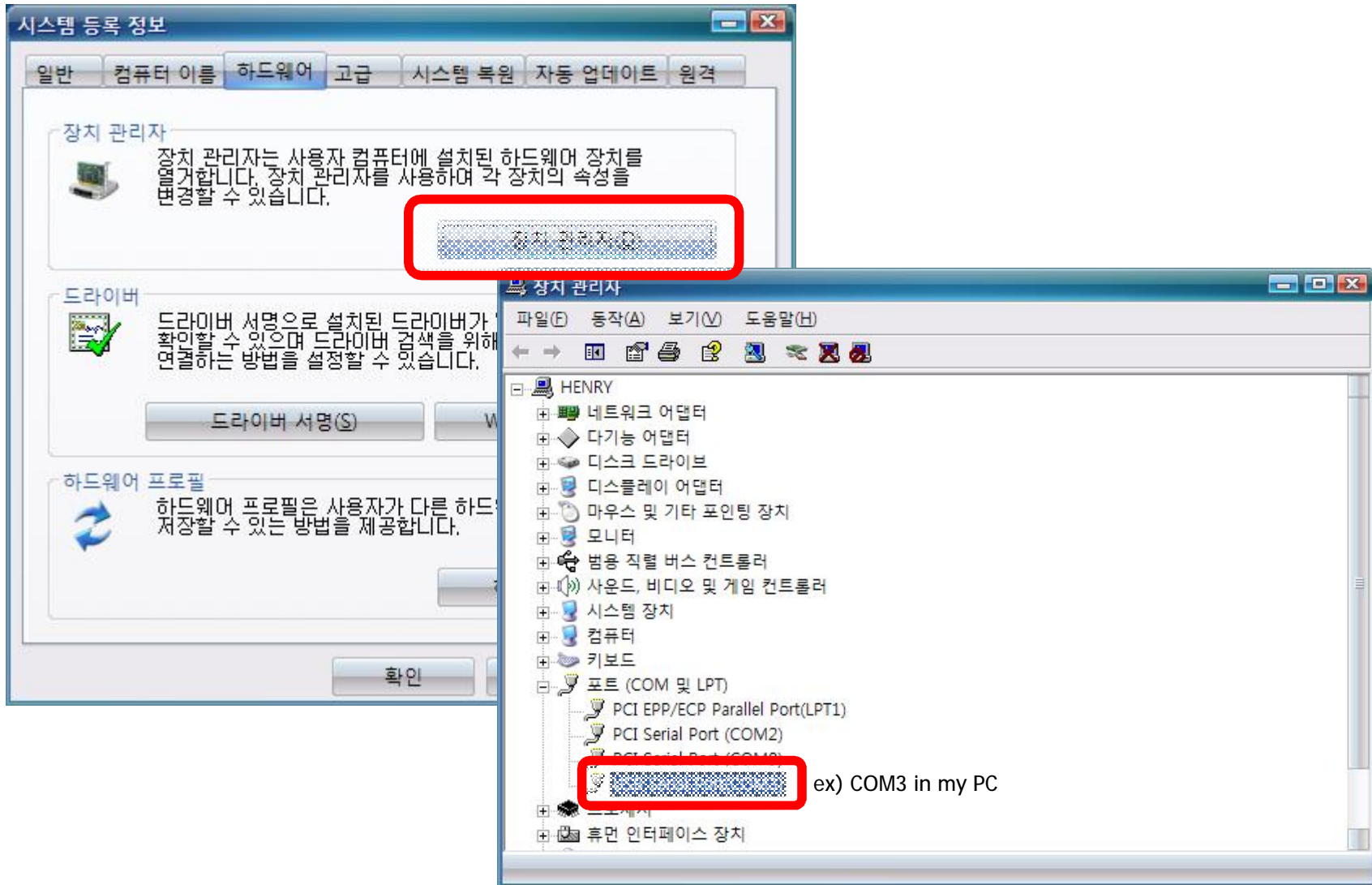
1. How to Setting – TouchPAD Demo Board

1. Connect the UART cable with your PC
2. Connect Power cable



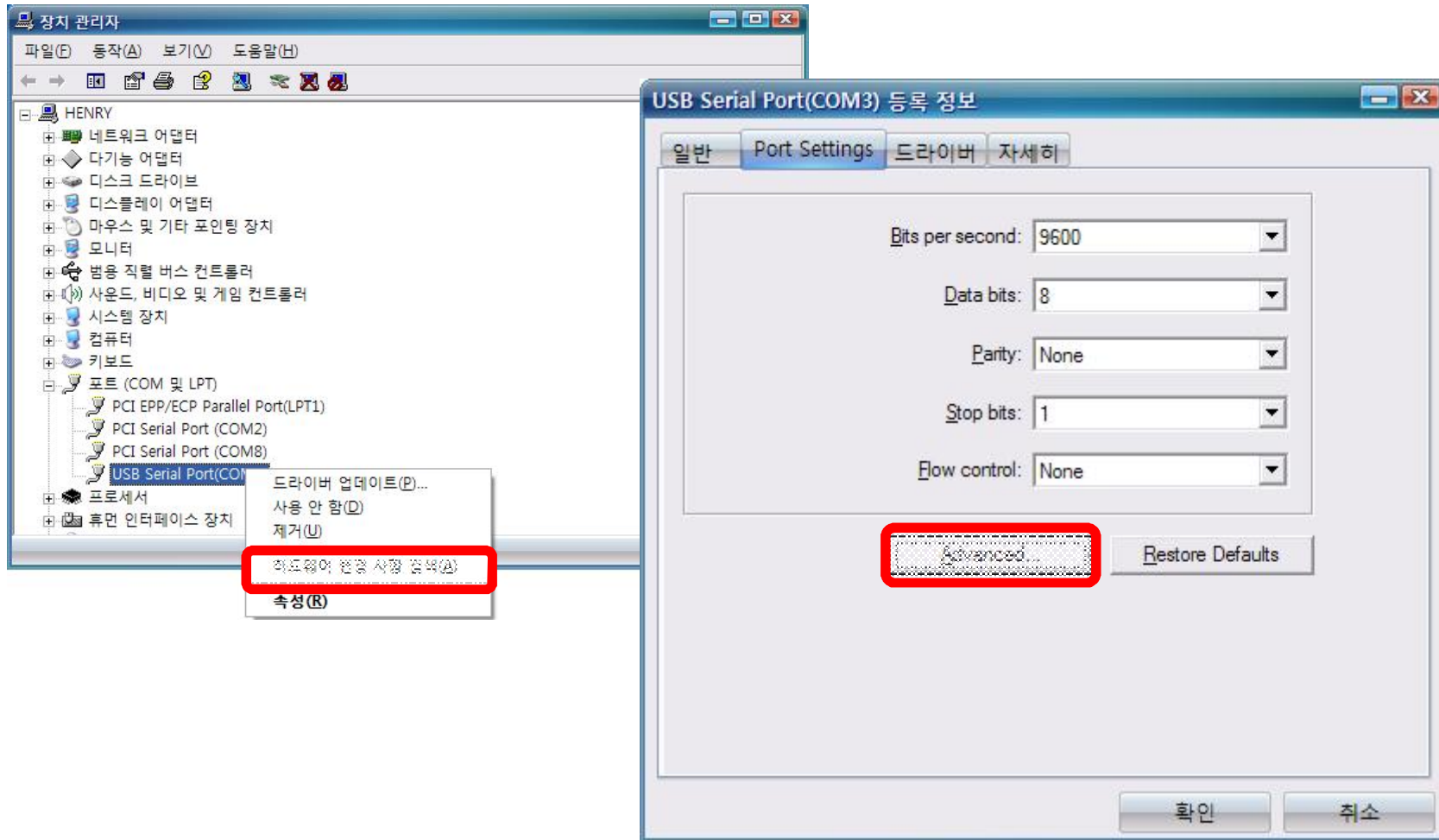
1. How to Setting – TouchPAD Demo Board

3. Check the your COM Port. (in Device manager)



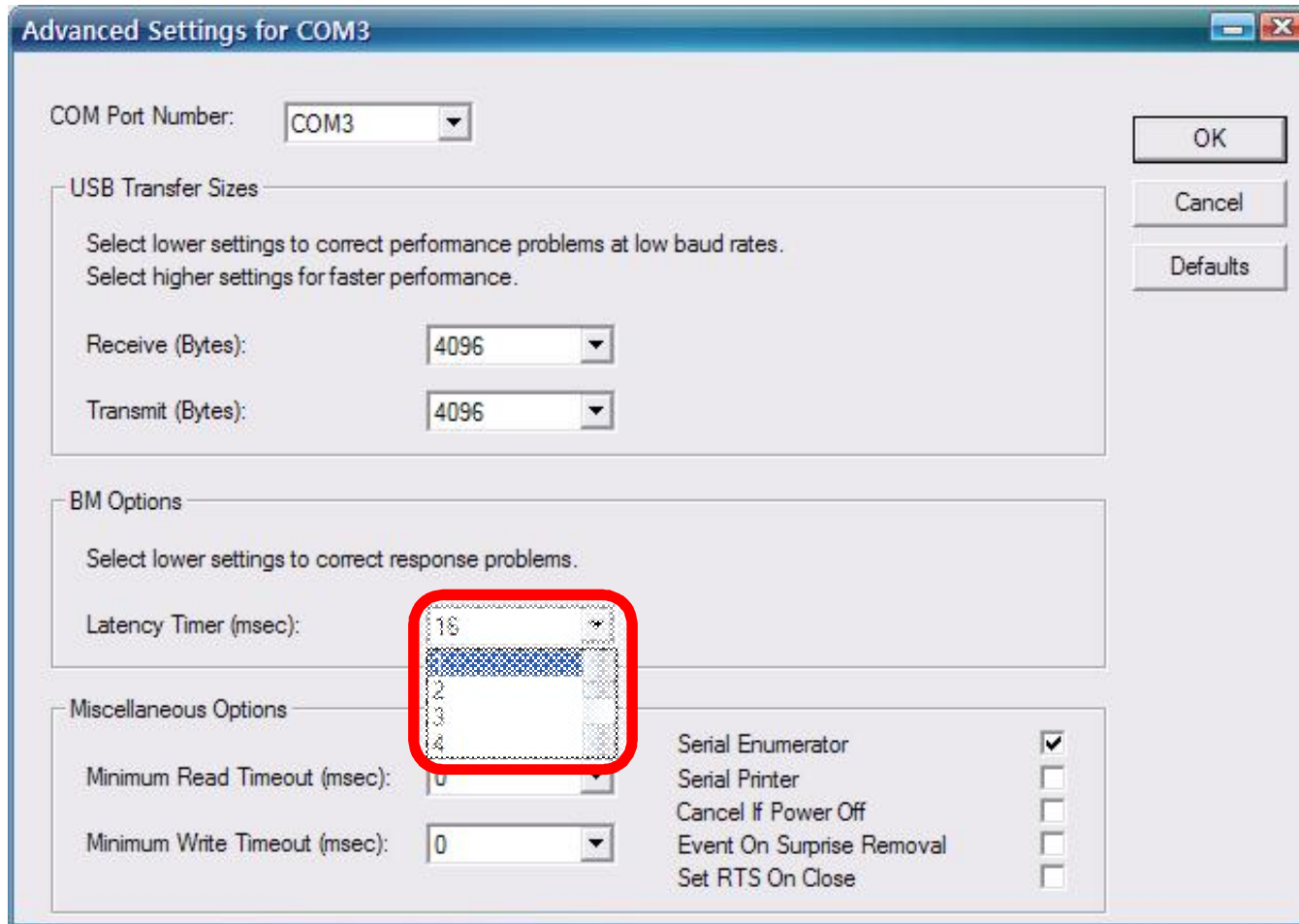
1. How to Setting – TouchPAD Demo Board

- 4. If your UART cable is USB to Serial.
 - 4-1. Enter the Properties.
 - 4-2. Enter the Advanced in "Port Setting" tab



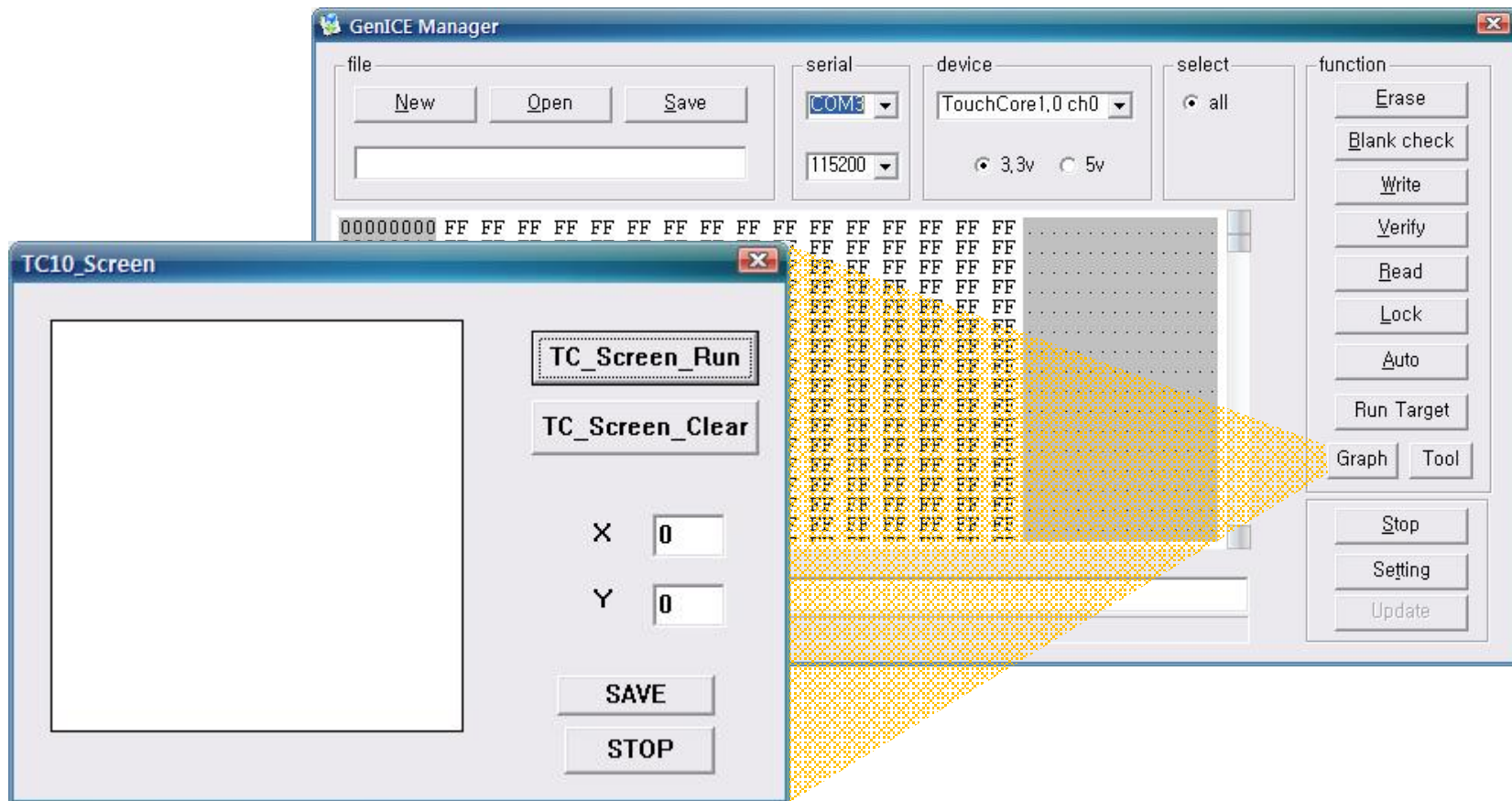
1. How to Setting – TouchPAD Demo Board

4-3. Setting the 'Latency Timer' to the minimum



1. How to Setting – TouchPAD Demo Board

5. Execute the GenICE Manager for TouchPAD (SF_TCPad_V1.0_080701.exe)
6. Setting the COM Port with your PC
7. Setting the boadrate to 115200bps
8. Setting the device to TouchCore1.0 (ch0 or ch1)
9. Click the 'Graph' button



1. How to Setting – TouchPAD Demo Board

10. Click the 'TC_Screen_Run'
11. Draw on the TouchPAD.

