



---

# GenICE User Manual

---

Ver. 2.0  
Mar. 2013

Copyright CORERIVER Semiconductor Co., Ltd. 2013  
All Rights Reserved

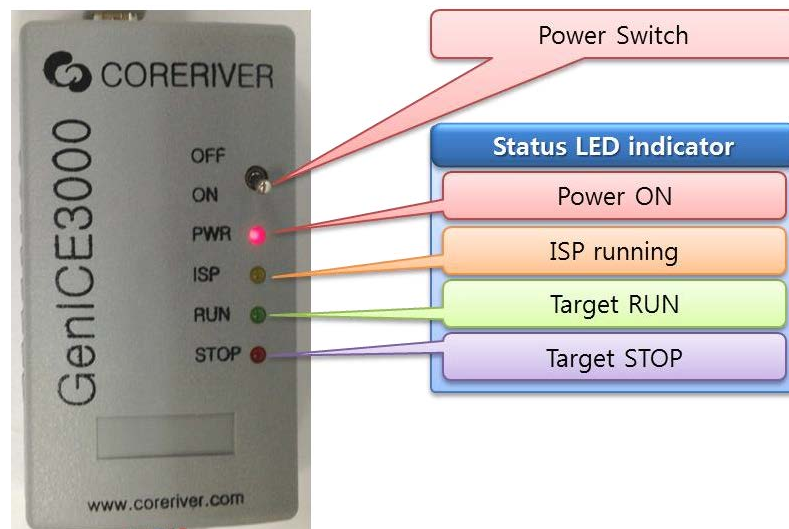
# Index

Part1. Introduction .....	2
1. Feature.....	2
2. Unpacking the System .....	2
3. Communication Structure.....	3
Part2. Getting Start .....	3
1. Connecting.....	3
2. Self Upgrade GenICE3000 .....	4
Part3. GenICE Manager .....	5
1. Description of the Main Window.....	5
2. Description of the Setting Window .....	7

## Part1. Introduction

### 1. Feature

- Output Voltage for Target Device : 3.3V, 5V
- Regulated Power Supply for 9V DC Power
- USB Interface to PC for Programming (USB 2.0 Support)
- Four LED indicators (PWR, ISP, RUN, STOP)



Picture 1

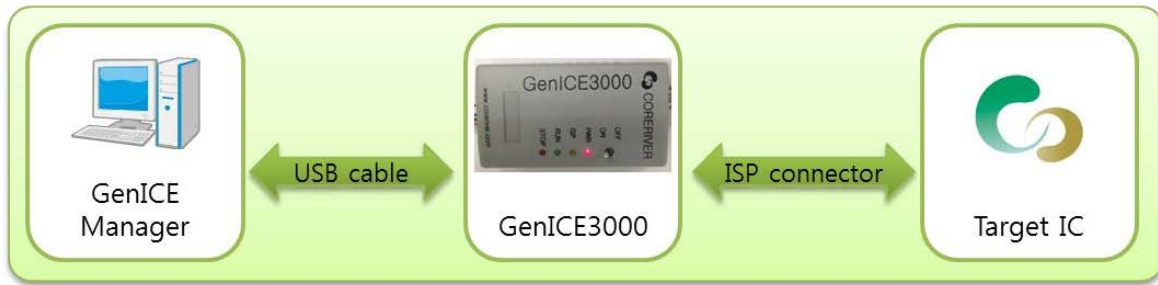
### 2. Unpacking the System

- USB cable
- ISP cable
- GenICE3000
- GenICE Manager(on Website <http://www.coreriver.com/tool/tool.html> )



Picture 2

### 3. Communication Structure



Picture 3

## Part2. Getting Start

### 1. Connecting

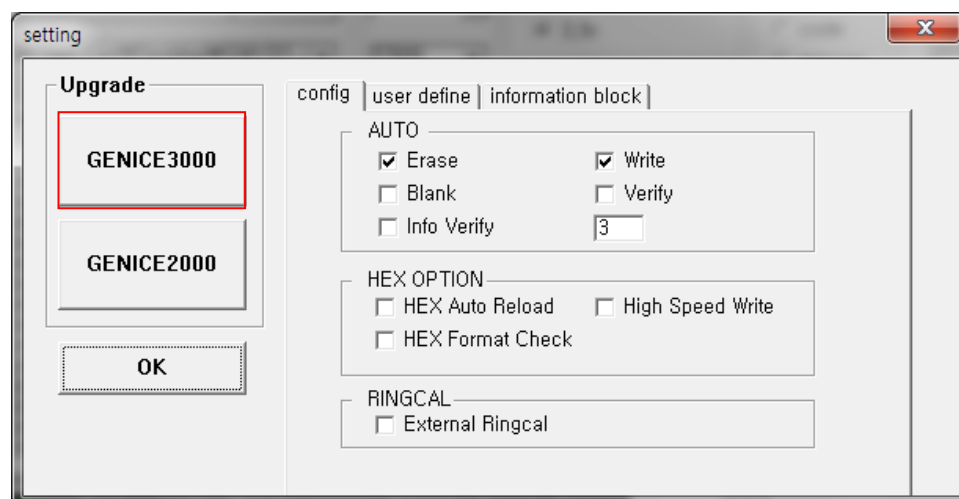
- GenICE device should be connecting with ISP cable and USB cable.
- In the following picture you can see connect.



Picture 4

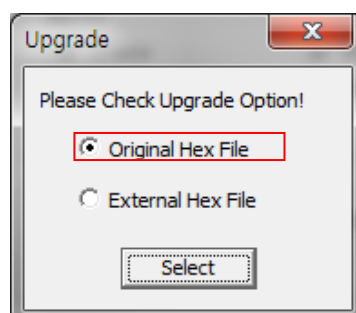
## 2. Self Upgrade GenICE3000

1. Setting Button Click
2. GENICE3000 Button Click



Picture 5

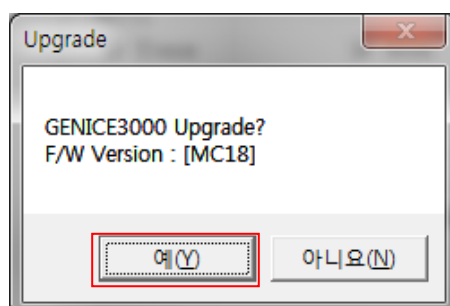
3. Original Hex File Select



Picture 6

4. Click left side button

- Please do not anything while GenICE3000 be upgraded.

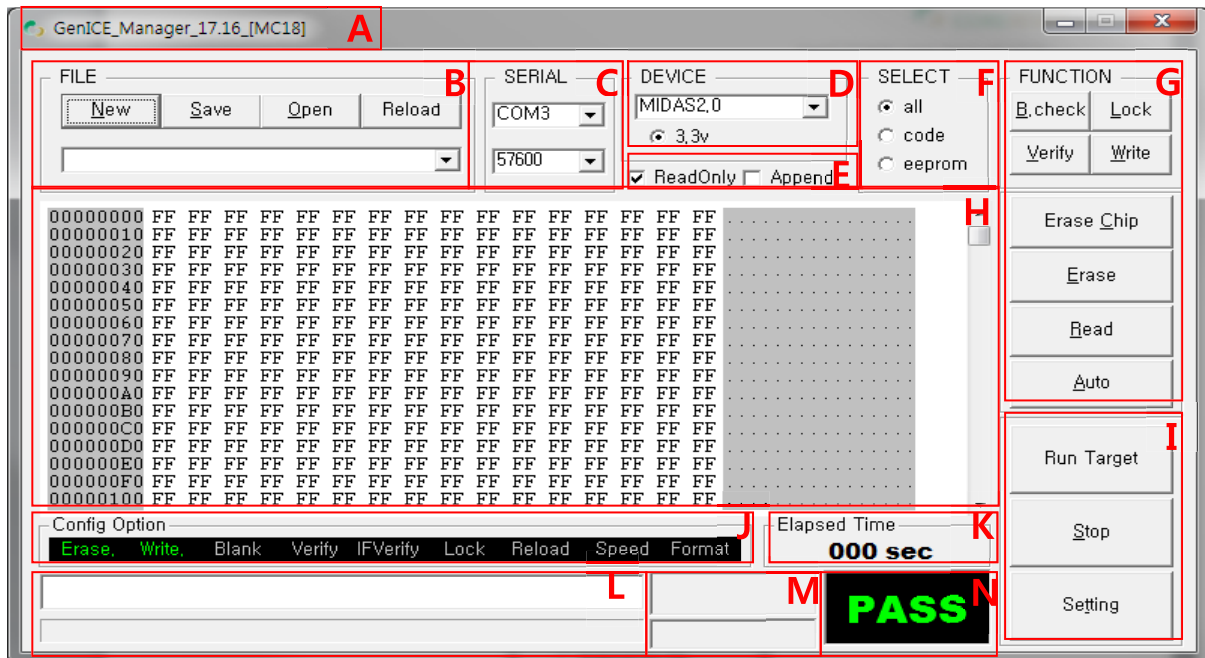


Picture 7

5. GenICE3000 Reset using the Power Switch

## Part3. GenICE Manager

### 1. Description of the Main Window



Picture 8

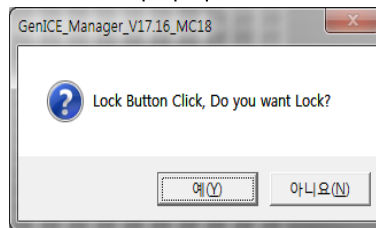
- A) Title: Version Information Display
- B) FILE
- New: Create new hex file
  - Save: Save hex file
  - Open: Load hex file
  - Reload: Reloading hex file
  - You can choose recently files
- C) SERIAL
- Port: Check your GenICE3000 port number
  - Baud rate: Set '**57600**'
- D) DEVICE
- Set your target device
  - Set VDD: 3.3V, 5.0V
- E) HEX value control
- Read-only: Hex Edit([H] on Picture 8) can write without Read-only option
  - Append: Hex file overlap

F) SELECT : Choice memory part

- All: Flash + EEPROM
- Code: Only Flash
- eeprom: Only EEPROM

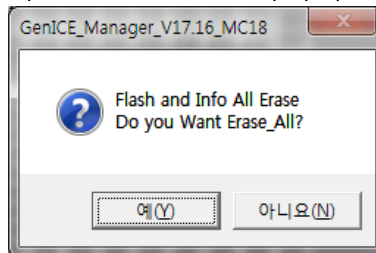
G) FUNCTION

- B.Check: Check Black (MCU ROM is all 'FF')
- Lock: Lock chip. Click event popup



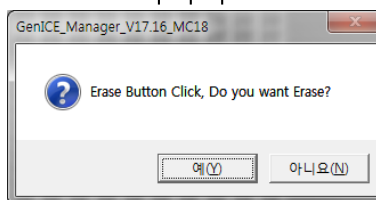
**Picture 9**

- Verify: Compare Hex Code to MCU ROM Code
- Write: Program code
- Erase Chip: Full chip erase. Click event popup.



**Picture 10**

- Erase: chip erase. Click event popup.



**Picture 11**

- Read: Read code from MCU ROM
- Auto: Automatically operate by checked option

H) HEX EIDT: Display Code

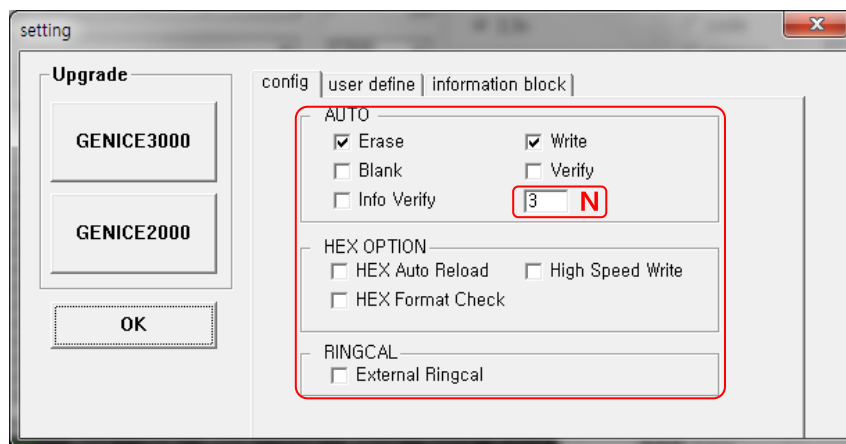
I) Run(Stop) Target: Run(Stop) target device

Stop: Stop operating

Setting: Refer to Description of the Setting Window

- J) Config Option: Auto setting value display window
- K) Elapsed Time: timer counting
- L) Display
  - Display test context
  - Display Progressing rate
- M) Display Checksum
- N) State Display

## 2. Description of the Setting Window



Picture 12

- Info Verify: Information data recovery, (If data is changed)  
After Information Read **N** times
  - Hex Auto Reload: Automatically reload hex file
  - High Speed Write: Only 3.xSeries
  - Hex Format Check: Hex format error check
  - Ringcal Check: Ringcal check, before Full chip erase
  - External Ringcal: Ringcal External hex option visible/ disable
- ✧ **[user define]** and **[information block]** are special option. Please do not touch this option.



<b>contents</b>	<b>Revision</b>	<b>Author / Date</b>
Create Document	V_1.3.0	JINA LEE / 2010-11-08
Add Append Mode / UI Update	V_1.4.0	JINA LEE / 2010-12-06
Modified Setting / UI Update	V_1.5.0	JINA LEE / 2010-12-20
Add Auto Upgrade	V_1.6.0	JINA LEE / 2011-01-18
Add SELECT function	V_1.7.0	JINA LEE / 2011-02-11
Modified Auto Upgrade / Add Recently Files	V_1.8.0	JINA LEE / 2011-04-12
Lock, Hex format check, Ringcal Upgrade UI Update	V_1.9.0	Paul NamKoong / 2012-01-19
UI Update	V_2.0.0	CLARK LEE / 2013-03-22