
GC230-S08IP

8-bit Turbo Microcontroller

CORERIVER Semiconductor reserves the right to make corrections, modifications, enhancements, improvements, and other changes to its products and services at any time.

- ◆ *To discontinue any product or service, CORERIVER should inform customers of that before 3 months through its homepage.*
- ◆ *Customers should obtain the latest relevant information before placing orders and should verify that such information is current and complete.*
- ◆ *The CORERIVER Semiconductor products listed in this document are intended for usage in general electronics applications. These CORERIVER Semiconductor products are neither intended nor warranted for usage in equipment that requires extraordinarily high quality and/or reliability or a malfunction or failure of which may cause loss of human life or bodily injury.*

Copyright CORERIVER Semiconductor Co., Ltd. 2020
All Rights Reserved

1 GC230-SO8IP Overview

1.1 General Description

GC230-SO8IP is a high-speed 80C52 compatible Microcontroller. It executes all of the conventional 80C52 instructions.

GC230-SO8IP has three timer/counters, 6 programmable I/O ports, 1 Watchdog timer, POR (Power-On Reset), and 1 LVD (Low Voltage Detector), 1 channel 8bit PWM, 3 channels 10bit ADC as peripherals. In addition, it contains an internal precision oscillator, which can generate the 12 MHz system clock signal instead of a crystal oscillator.

GC230-SO8IP operates over the extended -40°C to $+85^{\circ}\text{C}$ temperature range and is available in the 8-pin SOP package.

1.2 Features

- ◆ CPU
 - ✓ 8-bit turbo 80C52 architecture
 - ✓ 4 cycles/1 machine cycle
 - ✓ instruction level compatible with Intel 80C52
- ◆ 2 KB FLASH (Including 128B User EEPROM)
- ◆ Supporting ISP/IAP/MDS
- ◆ 128B Internal RAM
- ◆ Operating Voltage: +2.4V to +5.5V
- ◆ Operating Frequency (F_{sys})
 - ✓ 3.68 MHz (Internal POSC Clock, Default)
 - ✓ Max. 12 / 11.06 MHz @2.4V ~ 3.3V (External/Internal POSC Clock)
 - ✓ Max. 24 MHz @4.5V ~ 5.5V (External Clock)
- ◆ Operating temperature: -40°C ~ 85°C
- ◆ 6 Programmable I/O Pins
 - ✓ Pull-up control, Open drain, & Push-Pull output
 - ✓ TTL and CMOS compatible logic levels

- ◆ **Configurable Low Voltage Detector (LVD)**
- ◆ **Internal Precision OSC with Calibration function**
 - ✓ 11.06 MHz @+2.4V to +5.5V (Typ. +/- 1%)
- ◆ **3-channel 10-bit ADC**
 - ✓ Max. 120k SPS @ $F_{ADC} = 12$ MHz ($F_{SYS} = 12$ MHz)
 - ✓ Programmable Input Clock Frequency
- ◆ **1-channel 8-bit High Speed PWM**
- ◆ **23-bit Programmable Watchdog Timer**
- ◆ **16-bit Stop Timer**
- ◆ **Two 16-bit Timer/Counters**
- ◆ **7 Interrupt Sources**
 - ✓ Timer0/1, WDT, ADC, PWM, LVD
 - ✓ 1 External Interrupt Sources: Both Edge/Level
 - ✓ Two-level Interrupt Priority
- ◆ **Reset Sources**
 - ✓ On-chip Power-On-Reset (POR/LVR)
 - ✓ External Reset
 - ✓ Configurable Low Voltage Detector Reset
 - ✓ Watchdog Timer Reset
- ◆ **Power Down Wake-up Sources**
 - ✓ Reset Sources + 1 External Interrupt (Both Levels)
 - ✓ WDT Interrupt
- ◆ **Power Consumption**
 - ✓ Active Current: Max. 2mA @+3.0V, 2MHz
 - ✓ Idle Current: Max. 500uA @+3.0V 2MHz
 - ✓ Stop Current: Max. 1uA @+5.0V (All Clock OFF)
- ◆ **E.S.D. Protection up to 2,000 V**
- ◆ **Latch-up Protection Up to ± 200 mA**
- ◆ **Package**
 - ✓ 8-SOP

1.3 Applications

- ◆ Mobile Devices
- ◆ Multimedia
- ◆ Navigation Systems
- ◆ Home Appliance
- ◆ Other Electronic Devices

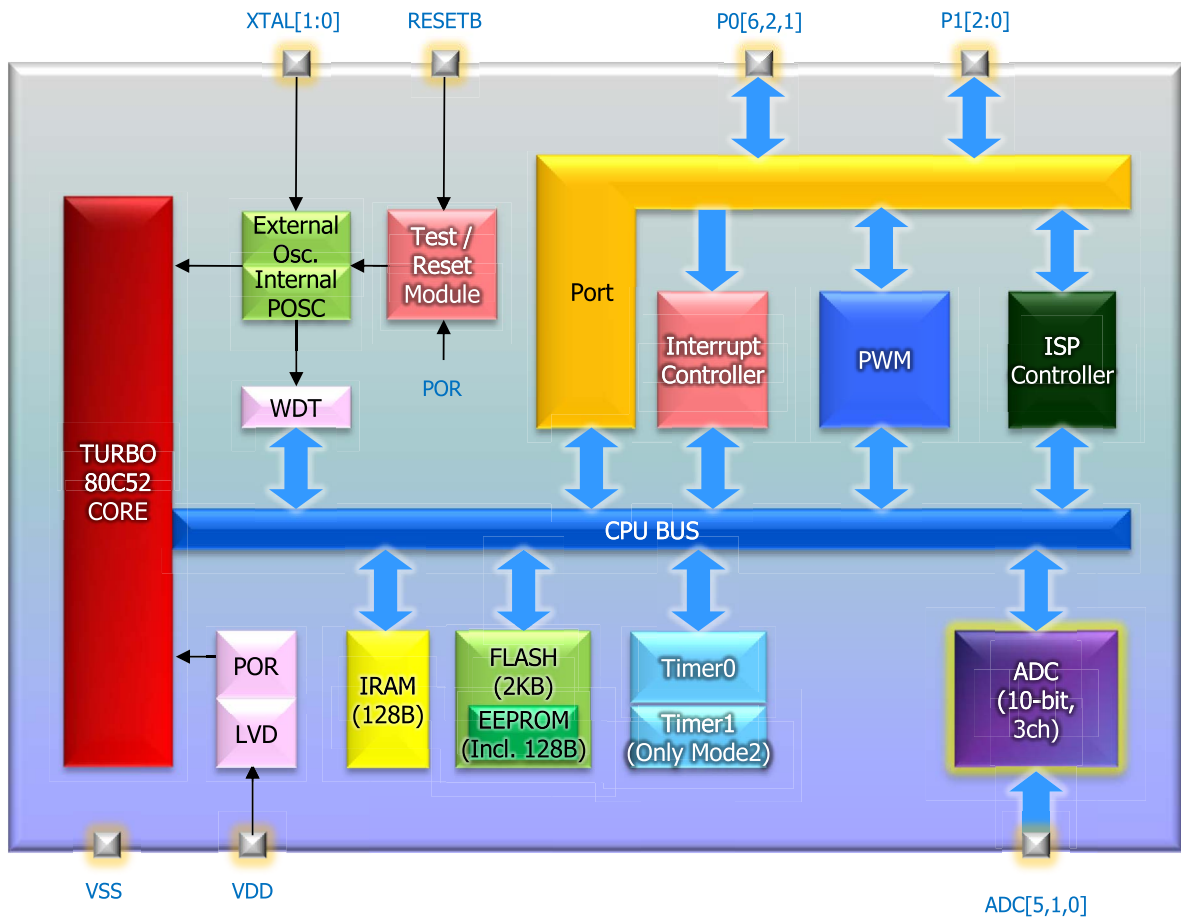
1.4 Product Family Guide

Product	Flash [Byte]	RAM [Byte]	Package	Programmable I/O	ADC (bit X Ch)	Other Peripherals
GC230-TS20I	2K	128	20-TSSOP	18	10 X12	2 Timer/Counters WDT IAP ISP EJTAG LVD POR Precision Oscillator 1-channel 8-bit PWM
GC230-SO20I	2K	128	20-SOP	18	10 X12	
GC230-TS16I	2K	128	16-TSSOP	14	10 X 8	
GC230-SO8I	2K	128	8-SOP	6	10 X 3	

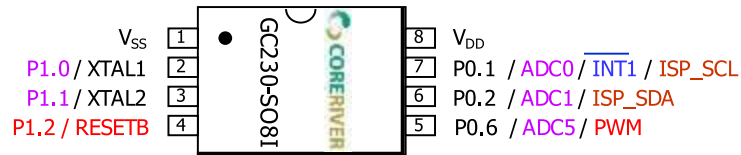
2 Block Diagram

Figure shows the block diagram of **GC230-SO8IP**. Programs reside in the internal program memory (Embedded Flash Memory). Data are read from or written to data memory (SRAM) or special function registers (SFRs).

The internal registers of **GC230-SO8IP** are configured as part of the on-chip RAM: therefore each register has an address. This is reasonable for **GC230-SO8IP**, since it has so many registers.



3 Pin Configuration



8-pin SOP Package Diagram

4 Pin Description

Pin No.	Name	Type	Description	Share Pins
1	VSS	GND		
2	XTAL1	I/O	Crystal Input	P1.0
3	XTAL2	I/O	Crystal Output	P1.1
4	RESETB	I/O	External Reset Input	P1.2
5	P0.6	I/O	General I/O	ADC5 / PWM
6	P0.2	I/O	General I/O	ADC1 / ISP_SDA
7	P0.1	I/O	General I/O	ADC0 / INT1B / ISP_SCL
8	VDD	PWR		

5 Absolute Maximum Ratings

Items	Conditions	Ranges
Voltage on any pin relative to Ground	-	-0.5 V to ($V_{DD}+0.5V$)
Voltage in V_{DD} relative to Ground	-	-0.5V to 6.5V
Output Voltage	-	-0.5 V to ($V_{DD}+0.5V$)
Output Current High	One I/O pin active	-25mA
	All I/O pin active	-100mA
Output Current Low	One I/O pin active	+30mA
	All I/O pin active	+150mA
Storage Temperature	-	$\leq 40^{\circ}\text{C}$
Soldering Temperature	-	260 $^{\circ}\text{C}$, 10 seconds within 5 $^{\circ}\text{C}$ of actual peak temperature

6 Recommended Operating Conditions

Symbol	Parameter	Rating
V_{DD}	DC supply voltage	2.4V to 5.5V
T_A	Industrial temperature range	-40 $^{\circ}\text{C}$ to 85 $^{\circ}\text{C}$

7 DC Characteristics

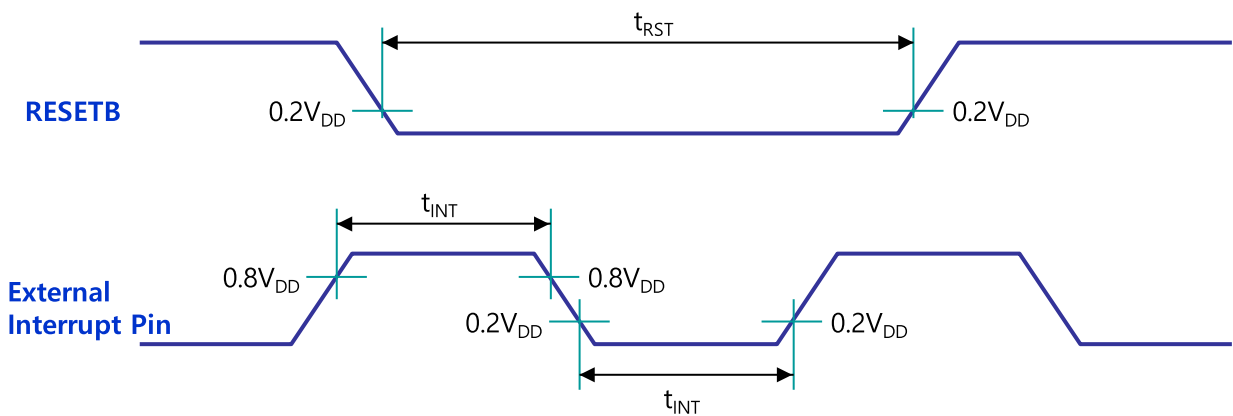
* $T_A = -40^{\circ}\text{C} \sim +85^{\circ}\text{C}$, $V_{DD} = 2.2\text{V} \sim 5.5\text{V}$ unless otherwise specified

Parameter	Symbol	Pin	Conditions	Value			Unit
				Min.	Typ.	Max.	
Input Low Voltage	V_{IL1}	RESETB, P0, P1, P2	$V_{DD} = 2.4\text{V} \sim 5.5\text{V}$	-0.5	-	$0.2V_{DD} - 0.1$	V
	V_{IL2}	XTAL1, XTAL2		0.5		$0.3V_{DD}$	
Input high Voltage	V_{IH1}	RESETB, P0, P1, P2	$V_{DD} = 2.4\text{V} \sim 5.5\text{V}$	$0.2V_{DD} + 1.0$	-	$V_{DD} + 0.5$	V
	V_{IH2}	XTAL1, XTAL2		$0.7V_{DD}$	-	$V_{DD} + 0.5$	
Output Low Voltage	V_{OL}	All Pins	$I_{OL} = 17\text{mA} @ V_{DD} = 5\text{V}$ $I_{OL} = 7\text{mA} @ V_{DD} = 3\text{V}$ $I_{OL} = 4\text{mA} @ V_{DD} = 2.4\text{V}$	-	-	$0.3V_{DDIO}$	V
Output High Voltage	V_{OH}	All Pins	$I_{OH} = -18\text{mA} @ V_{DD} = 5\text{V}$ $I_{OH} = -6\text{mA} @ V_{DD} = 3\text{V}$ $I_{OH} = -3\text{mA} @ V_{DD} = 2.4\text{V}$	$0.7V_{DDIO}$	-	-	V
	V_{OHP}	ALL Pins (Pull-up Resistor Only)	$I_{OHP} = -49\mu\text{A} @ V_{DD} = 5\text{V}$ $I_{OHP} = -28\mu\text{A} @ V_{DD} = 3\text{V}$ $I_{OHP} = -22\mu\text{A} @ V_{DD} = 2.4\text{V}$	$0.7V_{DDIO}$	-	-	V
Input Leakage Current	I_{IL}	All Pins Except of XTAL1, XTAL2	$V_{IN} = V_{IH}$ or V_{IL}	-	-	± 1	μA
Pin Capacitance	C_{IO}	All Pins	$V_{DD} = 5\text{V}$	-	10	-	pF

8 AC Characteristics

* $T_A = -40\text{ }^{\circ}\text{C} \sim +85\text{ }^{\circ}\text{C}$ unless otherwise specified

Parameter	Symbol	Pin	Conditions	Value			Unit
				Min.	Typ.	Max.	
Operating Frequency	F_{OSC}	XTAL1, XTAL2	$V_{\text{DD}} = 5\text{V} \pm 10\%$	1	-	24	MHz
		Internal POSC		1	-	12	
		XTAL1, XTAL2, Internal POSC	$V_{\text{DD}} = 3\text{V} \pm 10\%$	1	-	12	
RESETB Input Width	t_{RST}	RESETB	$V_{\text{DD}} = 5\text{V} \pm 10\%$	24	-	-	F_{OSC}
			$V_{\text{DD}} = 3\text{V} \pm 10\%$	24	-	-	
External Interrupt Input Width	t_{INT}	External Interrupt	$V_{\text{DD}} = 5\text{V} \pm 10\%$	4	-	-	F_{OSC}
			$V_{\text{DD}} = 3\text{V} \pm 10\%$	4	-	-	

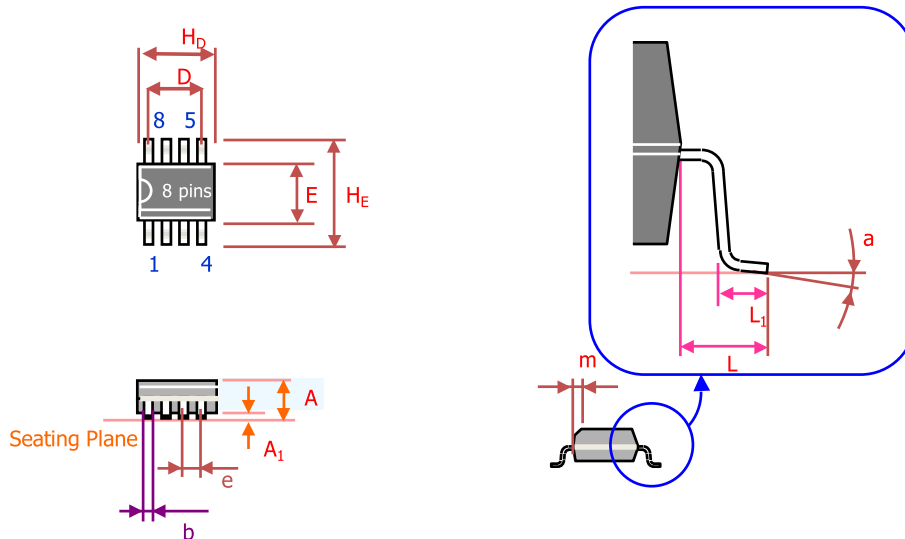


9 ADC Specifications

* TA = -40 °C ~ +85 °C unless otherwise specified

Parameter	Symbol	Conditions	Value			Unit	
			Min.	Typ.	Max.		
Supply Voltage	V_{DDADC}	$V_{DDADC} = V_{DD}$	2.4	-	5.5	V	
Input Voltage	V_{INADC}	-	V_{SS}	-	V_{DD}	V	
Resolution	RES_{ADC}	-	-	10	-	bit	
Operating Frequency	F_{ADC}	$V_{DD} = 4.5V \sim 5.5V$ $V_{DD} = 2.4V \sim 3.3V$	-	-	10 5	MHz	
Conversion Time	t_{ADC}	-	-	$96 / F_{ADC}$	-	s	
Overall Accuracy	OA_{ADC}	$V_{DD} = 5V, F_{ADC} = 10MHz$ $V_{DD} = 3V, F_{ADC} = 5MHz$	-	± 2	± 4	LSB	
Integral Nonlinearity	INL_{ADC}	$V_{DD} = 5V, F_{ADC} = 10MHz$ $V_{DD} = 3V, F_{ADC} = 5MHz$	-	± 2	± 4	LSB	
Differential Nonlinearity	DNL_{ADC}	$V_{DD} = 5V, F_{ADC} = 10MHz$ $V_{DD} = 3V, F_{ADC} = 5MHz$	-	± 0.5	± 1	LSB	
Zero Input Error	ZIE_{ADC}	$V_{DD} = 5V, F_{ADC} = 10MHz$ $V_{DD} = 3V, F_{ADC} = 5MHz$	-	± 2	± 4	LSB	
Full Scale Error	FSE_{ADC}	$V_{DD} = 5V, F_{ADC} = 10MHz$ $V_{DD} = 3V, F_{ADC} = 5MHz$	-	± 2	± 4	LSB	
Analog Input Capacitance	C_{INADC}	-	-	10	15	pF	
ADC Current	Active	I_{ADC}	$V_{DD} = 5V, F_{ADC} = 10MHz$	-	1	2	mA
			$V_{DD} = 3V, F_{ADC} = 5MHz$	-	0.3	0.6	
	Power-down		$V_{DD} = 5V$	-	-	100	nA

10 8-pin SOP Package Dimension



Symbol	Dimension in Inches			Dimension in mm		
	Min.	Nom.	Max.	Min.	Nom.	Max.
A	0.093	0.099	0.104	2.35	2.45	2.65
A ₁	0.004	0.008	0.012	0.10	0.20	0.30
b	0.014	0.016	0.019	0.35	0.42	0.49
D	-	0.150	-	-	3.81	-
E	0.150	0.153	0.157	3.80	3.90	4.00
H _D	0.189	0.193	0.197	4.80	4.90	5.00
H _E	0.234	0.239	0.244	5.95	6.07	6.20
L	0.038	0.043	0.048	0.97	1.08	1.2
L ₁	0.022	0.027	0.032	0.58	0.70	0.82
a	0°	-	8°	0°	-	8°
e	0.050 BSC			1.27 BSC		
m	0.010	0.015	0.020	0.25	0.37	0.50

Notes:

1. Dimension D & E include mold mismatch and are determined at the mold parting line.
2. General appearance spec. should be based on final visual inspection spec.