

GC800A

8-Bit Turbo Microcontroller

CORERIVER Semiconductor reserves the right to make corrections, modifications, enhancements, improvements, and other changes to its products and services at any time.

- ◆ *To discontinue any product or service, CORERIVER should inform customers of that before 3 months through its homepage.*
- ◆ *Customers should obtain the latest relevant information before placing orders and should verify that such information is current and complete.*
- ◆ *The CORERIVER Semiconductor products listed in this document are intended for usage in general electronics applications. These CORERIVER Semiconductor products are neither intended nor warranted for usage in equipment that requires extraordinarily high quality and/or reliability or a malfunction or failure of which may cause loss of human life or bodily injury.*

Copyright CORERIVER Semiconductor Co., Ltd. 2017
All Rights Reserved

1 GC800A Overview

1.1 General Description

The **GC800A** of CORERIVER is a group of fast 80C52 compatible microcontrollers. The redesign of its processor core reduces one machine cycle to four system clock cycles. As a result, it executes almost all of its 8052 instructions about 3 times faster than that of traditional 80C52.

GC800A has three timer/counters, maximum 56 programmable I/O pins, maximum 8-channel PWM (Pulse Width Modulator) output, maximum 4 com x 36 segment LCD controller, 1 Watchdog timer, POR (Power-On Reset), 2 UARTs, 1 I²C0(Master/Slave), 1 I²C1(Slave), 1 SPI, maximum 12-channel ADC (Analog to Digital Converter), 1 Comparator, 1 Universal Remote Controller, and 1 LVD (Low Voltage Detector) as peripherals. In addition, it contains an internal precision oscillator and ring oscillator, which can generate the 25 MHz system clock signal instead of a crystal oscillator.

GC800A operates over the extended -40°C to +85°C temperature range, and is available in the 48-pin QFN, 68-pin QFN package. On-chip hardware debugging engine help to develop a system. Easy-to-use training kits are also provided.

1.2 Features

- ◆ CPU
 - 8-bit turbo 80C52 architecture
 - 4 cycles/ 1 machine cycles
 - Instruction level compatible with Intel 80C52
- ◆ 64KB FLASH
- ◆ 2KB Internal RAM
 - 1.7KB Internal Aux. RAM
 - 256B Internal RAM
- ◆ Operating Voltage: +2.35V to +5.5V
- ◆ Operating Frequency
 - Max. 48MHz
- ◆ Internal Ring OSC with Calibration function
 - Ring OSC Typ. 25MHz (+/- 3%)
 - Precision OSC Typ. 44.2MHz (+/- 1%)

- 10KHz (+/- 10%): Low Power OSC.
- ◆ Supporting ISP/IAP/MDS
- ◆ Three 16/8-bit Timer/Counters
- ◆ Two 4-channel High Speed PWMs for LED Dimming
- ◆ 24-bit Programmable Watchdog Timer
- ◆ 1-channel I2C0 Communication (Master/Slave)
- ◆ 1-channel I2C1 Communication (Slave Only)
- ◆ 24-bit Sleep Timer
- ◆ 1-channel SPI Communication (Master/Slave)
- ◆ 2-channel UART Communication
- ◆ 12-channel (or 9-channel), 12-bit ADC
- ◆ Comparator
- ◆ Universal Remote Controller
- ◆ 4 com x 36 (or 28) SEG LCD controller
- ◆ 24 Interrupt Sources
 - Timer0/1/2, WDT, SPI, I2C0/1, UART0/1, ADC, PWM0/1
 - COMP / LVD / UR / sleep timer
 - 8 External Interrupt
 - Two-level Interrupt Priority
- ◆ Reset Sources
 - On-chip Power-On-Reset (POR)
 - External Reset
 - Low Voltage Detector Reset (LVR)
 - Watchdog Timer Reset
- ◆ Power Down Wake-up Sources
 - Reset Sources + 8 External Interrupt (Both Levels)
 - Sleep Timer Interrupt
- ◆ Power Consumption
 - Active Current : Typ. 1.5mA @5.0V, 4MHz
 - Idle Current : Typ. 700uA @5.0V, 4MHz
 - Stop Current : Typ. 5uA @5.0V
- ◆ E.S.D. Protection up to
 - 8,000V for All pin
- ◆ Latch-up Protection Up to $\pm 200\text{mA}$

- ◆ Package
 - 48-QFN (6mm X 6mm)
 - 68-QFN (8mm X 8mm)

1.3 Applications

- ◆ TV, Monitor, Home Theater
- ◆ Refrigerator, Washer, Air conditioner
- ◆ Battery power applications

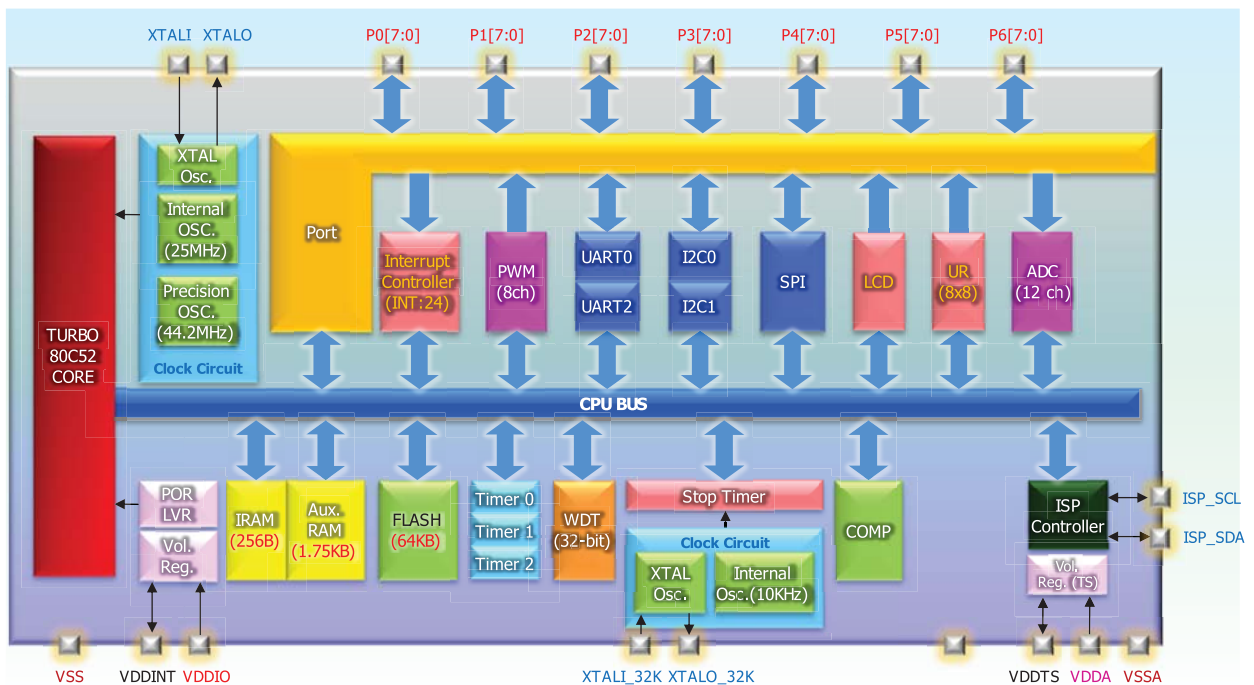
1.4 Product Family Guide

Product	Flash [Byte]	RAM [Byte]	LCD	ADC (bit x Ch)	PWM (bit x Ch)	I/O Pins	Package	Other Peripherals
GC800A-QF68IP	64K	1.7K + 256	4 x 36	12 x 12	8 x 8	56	68-QFN (8x8, 0.85T)	IAP ISP EJTAG 3 T/C 1 I2C 1 SPI 2 UART LCD ADC PWM WDT COMPARATOR LVD POR POSC RING
GC800A-QF48IP	64K	1.7K + 256	4 x 28	12 x 9	8 x 8	42	48-QFN (6x6, 0.85T)	
GC801A-QF48IP	64K	1.7K + 256	4 x 26	12 x 9	8 x 8	42	48-QFN (6x6, 0.85T)	

2 Block Diagram

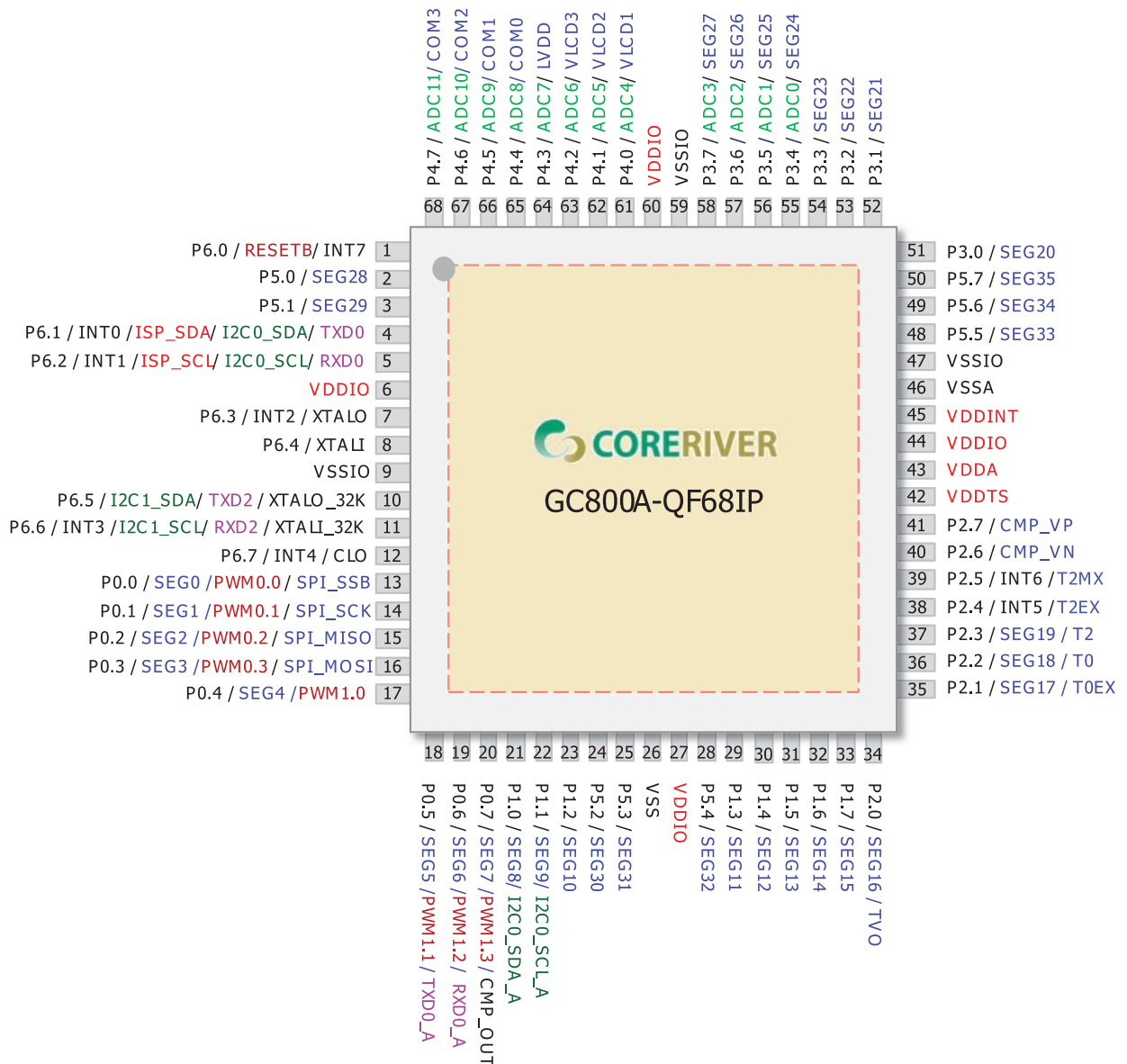
Figure shows the block diagram of **GC800A**. Programs reside in the internal program memory (Embedded Flash Memory). Data are read from or written to data memory (SRAM) or special function registers (SFRs).

The internal registers of **GC800A** are configured as part of the on-chip RAM: therefore each register has an address. This is reasonable for **GC800A**, since it has so many registers.



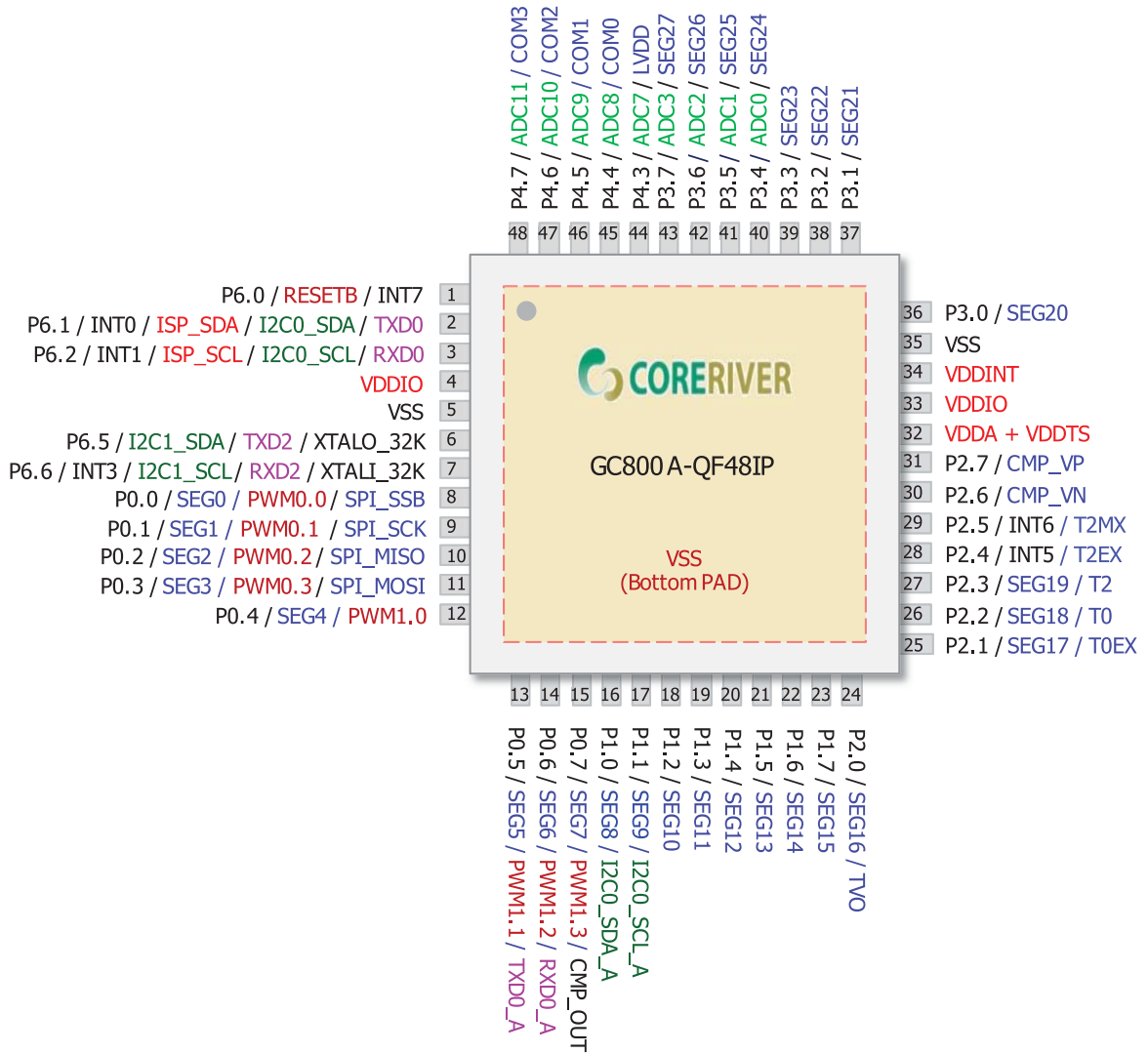
3 Pin Configuration

3.1 QFN 68 Pin



GC800A-QF68IP Package Diagram

3.2 QFN 48 Pin



GC800A-QF48IP Package Diagram

4 Pin Description

4.1 GC800-QF68IP

Pin-No	Symbol	Type	Description	Share Pins
1	P6.0	I/O	General I/O Port 6.0	INT7 / RESETB
2	P5.0	I/O	General I/O Port 5.0	SEG28
3	P5.1	I/O	General I/O Port 5.1	SEG29
4	P6.1	I/O	General I/O Port 6.1	INT0 / ISP_SDA / I2C0_SDA / TxD0
5	P6.2	I/O	General I/O Port 6.2	INT1 / ISP_SCL / I2C0_SCL / RxD0
6	VDDIO	PWR	Power Supply	-
7	P6.3	I/O	General I/O Port 6.3	INT2 / XTALO
8	P6.4	I/O	General I/O Port 6.4	T2OVF / XTALI
9	VSSIO	GND	I/O PAD Ground	
10	P6.5	I/O	General I/O Port 6.5	I2C1_SDA / TxD1 / XTALO_32K
11	P6.6	I/O	General I/O Port 6.6	I2C1_SCL / RxD1 / XTALI_32K / INT3
12	P6.7	I/O	General I/O Port 6.7	INT4 / CLO
13	P0.0	I/O	General I/O Port 0.0	SEG0 / PWM0.0 / SPI_SSB
14	P0.1	I/O	General I/O Port 0.1	SEG1 / PWM0.1 / SPI_SCK
15	P0.2	I/O	General I/O Port 0.2	SEG2 / PWM0.2 / SPI_MISO
16	P0.3	I/O	General I/O Port 0.3	SEG3 / PWM0.3 / SPI_MOSI
17	P0.4	I/O	General I/O Port 0.4	SEG4 / PWM1.0 / REM
18	P0.5	I/O	General I/O Port 0.5	SEG5 / PWM1.1 / TxD0_A
19	P0.6	I/O	General I/O Port 0.6	SEG6 / PWM1.2 / RxD0_A
20	P0.7	I/O	General I/O Port 0.7	SEG7 / PWM1.3 / CMP_OUT
21	P1.0	I/O	General I/O Port 1.0	SEG8 / PWM0.0_A / I2C0_SDA_A
22	P1.1	I/O	General I/O Port 1.1	SEG9 / PWM0.1_A / I2C0_SCL_A
23	P1.2	I/O	General I/O Port 1.2	SEG10 / PWM0.2_A
24	P5.2	I/O	General I/O Port 5.2	SEG30
25	P5.3	I/O	General I/O Port 5.3	SEG31
26	VSS	GND	Internal Ground	
27	VDDIO	PWR	Power Supply	
28	P5.4	I/O	General I/O Port 5.4	SEG32

29	P1.3	I/O	General I/O Port 1.3	SEG11 / PWM0.3_A
30	P1.4	I/O	General I/O Port 1.4	SEG12 / PWM1.0_A
31	P1.5	I/O	General I/O Port 1.5	SEG13 / PWM1.1_A
32	P1.6	I/O	General I/O Port 1.6	SEG14 / PWM1.2_A
33	P1.7	I/O	General I/O Port 1.7	SEG15 / PWM1.3_A
34	P2.0	I/O	General I/O Port 2.0	SEG16 / TVO
35	P2.1	I/O	General I/O Port 2.1	SEG17 / T0EX
36	P2.2	I/O	General I/O Port 2.2	SEG18 / T0
37	P2.3	I/O	General I/O Port 2.3	SEG19 / T2
38	P2.4	I/O	General I/O Port 2.4	INT5 / T2EX
39	P2.5	I/O	General I/O Port 2.5	INT6 / T2MX
40	P2.6	I/O	General I/O Port 2.6	CMP_VN
41	P2.7	I/O	General I/O Port 2.7	CMP_VP
42	VDDTS	O	Analog Power Filter	
43	VDDA	PWR	ADC Power Supply	
44	VDDIO	PWR	Power Supply	
45	VDDINT	O	Digital Power Filter (+1.5V)	
46	VSSA	GND	Ground	
47	VSSIO	GND	I/O PAD Ground	
48	P5.5	I/O	General I/O Port 5.5	SEG33
49	P5.6	I/O	General I/O Port 5.6	SEG34
50	P5.7	I/O	General I/O Port 5.7	SEG35
51	P3.0	I/O	General I/O Port 3.0	SEG20
52	P3.1	I/O	General I/O Port 3.1	SEG21
53	P3.2	I/O	General I/O Port 3.2	SEG22
54	P3.3	I/O	General I/O Port 3.3	SEG23
55	P3.4	I/O	General I/O Port 3.4	SEG24 / ADC0
56	P3.5	I/O	General I/O Port 3.5	SEG25 / ADC1
57	P3.6	I/O	General I/O Port 3.6	SEG26 / ADC2
58	P3.7	I/O	General I/O Port 3.7	SEG27 / ADC3
59	VSSIO	GND	I/O PAD Ground	
60	VDDIO	PWR	Power Supply	
61	P4.0	I/O	General I/O Port 4.0	VLCD1 / ADC4

62	P4.1	I/O	General I/O Port 4.1	VLCD2 / ADC5
63	P4.2	I/O	General I/O Port 4.2	VLCD3 / ADC6
64	P4.3	I/O	General I/O Port 4.3	LVDD / ADC7
65	P4.4	I/O	General I/O Port 4.4	COM0 / ADC8 / I2C1_SDA_A / SPI_SSB_A
66	P4.5	I/O	General I/O Port 4.5	COM1 / ADC9 / I2C1_SCL_A / SPI_SCK_A
67	P4.6	I/O	General I/O Port 4.6	COM2 / ADC10 / TxD2_A / SPI_MISO_A
68	P4.7	I/O	General I/O Port 4.7	COM3 / ADC11 / RxD2_A / SPI_MOSI_A

4.2 GC800-QF48IP

Pin-No	Symbol	Type	Description	Share Pins
1	P6.0	I/O	General I/O Port 6.0	INT7 / RESETB
2	P6.1	I/O	General I/O Port 6.1	INT0 / ISP_SDA / I2C0_SDA / TxD0
3	P6.2	I/O	General I/O Port 6.2	INT1 / ISP_SCL / I2C0_SCL / RxD0
4	VDDIO	PWR	Power Supply	-
5	VSS	GND	Ground	-
6	P6.5	I/O	General I/O Port 6.5	I2C1_SDA / TxD1 / XTALO_32K
7	P6.6	I/O	General I/O Port 6.6	I2C1_SCL / RxD1 / XTALI_32K / INT3
8	P0.0	I/O	General I/O Port 0.0	SEG0 / PWM0.0 / SPI_SSB
9	P0.1	I/O	General I/O Port 0.1	SEG1 / PWM0.1 / SPI_SCK
10	P0.2	I/O	General I/O Port 0.2	SEG2 / PWM0.2 / SPI_MISO
11	P0.3	I/O	General I/O Port 0.3	SEG3 / PWM0.3 / SPI_MOSI
12	P0.4	I/O	General I/O Port 0.4	SEG4 / PWM1.0 / REM
13	P0.5	I/O	General I/O Port 0.5	SEG5 / PWM1.1 / TxD0_A
14	P0.6	I/O	General I/O Port 0.6	SEG6 / PWM1.2 / RxD0_A
15	P0.7	I/O	General I/O Port 0.7	SEG7 / PWM1.3 / CMP_OUT
16	P1.0	I/O	General I/O Port 1.0	SEG8 / PWM0.0_A / I2C0_SDA_A
17	P1.1	I/O	General I/O Port 1.1	SEG9 / PWM0.1_A / I2C0_SCL_A
18	P1.2	I/O	General I/O Port 1.2	SEG10 / PWM0.2_A
19	P1.3	I/O	General I/O Port 1.3	SEG11 / PWM0.3_A
20	P1.4	I/O	General I/O Port 1.4	SEG12 / PWM1.0_A
21	P1.5	I/O	General I/O Port 1.5	SEG13 / PWM1.1_A
22	P1.6	I/O	General I/O Port 1.6	SEG14 / PWM1.2_A
23	P1.7	I/O	General I/O Port 1.7	SEG15 / PWM1.3_A
24	P2.0	I/O	General I/O Port 2.0	SEG16 / TVO
25	P2.1	I/O	General I/O Port 2.1	SEG17 / T0EX
26	P2.2	I/O	General I/O Port 2.2	SEG18 / T0
27	P2.3	I/O	General I/O Port 2.3	SEG19 / T2
28	P2.4	I/O	General I/O Port 2.4	INT5 / T2EX
29	P2.5	I/O	General I/O Port 2.5	INT6 / T2MX
30	P2.6	I/O	General I/O Port 2.6	CMP_VN

31	P2.7	I/O	General I/O Port 2.7	CMP_VP
32	VDDTS	O	Analog Power Filter	
	VDDA	PWR	ADC Power Supply	
33	VDDIO	PWR	Power Supply	
34	VDDINT	O	Digital Power Filter (+1.5V)	
35	VSS	GND	Ground	
36	P3.0	I/O	General I/O Port 3.0	SEG20
37	P3.1	I/O	General I/O Port 3.1	SEG21
38	P3.2	I/O	General I/O Port 3.2	SEG22
39	P3.3	I/O	General I/O Port 3.3	SEG23
40	P3.4	I/O	General I/O Port 3.4	SEG24 / ADC0
41	P3.5	I/O	General I/O Port 3.5	SEG25 / ADC1
42	P3.6	I/O	General I/O Port 3.6	SEG26 / ADC2
43	P3.7	I/O	General I/O Port 3.7	SEG27 / ADC3
44	P4.3	I/O	General I/O Port 4.3	LVDD / ADC7
45	P4.4	I/O	General I/O Port 4.4	COM0 / ADC8 / I2C1_SDA_A / SPI_SSB_A
46	P4.5	I/O	General I/O Port 4.5	COM1 / ADC9 / I2C1_SCL_A / SPI_SCK_A
47	P4.6	I/O	General I/O Port 4.6	COM2 / ADC10 / TxD2_A / SPI_MISO_A
48	P4.7	I/O	General I/O Port 4.7	COM3 / ADC11 / RxD2_A / SPI_MOSI_A

5 Absolute Maximum Ratings

. Absolute Maximum Ratings (TA = 25°C)

Item	Conditions	Range
DC Voltage in V _{DDIO} relative to Ground	-	-0.5 V to +6.0V
DC Input Voltage	-	-0.5V to (V _{DDIO} +0.5V)
DC Output Voltage	-	-0.5 V to (V _{DDIO} +0.5V)
DC Output Current High	One I/O pin active	-25mA
	All I/O pin active	-100mA
DC Output Current Low	One I/O pin active	+30mA
	All I/O pin active	+150mA
Storage Temperature	-	-65 °C to +150 °C
Soldering Temperature	-	260 °C for 10 seconds

. Recommended Operating Conditions

Item	Symbol	Range
Operating Voltage	V _{DDIO}	+2.35V to +5.5V
	V _{DDA}	+2.35V to +V _{DDIO}
Operating Temperature	-	-40°C to + 85°C

6 DC Characteristics

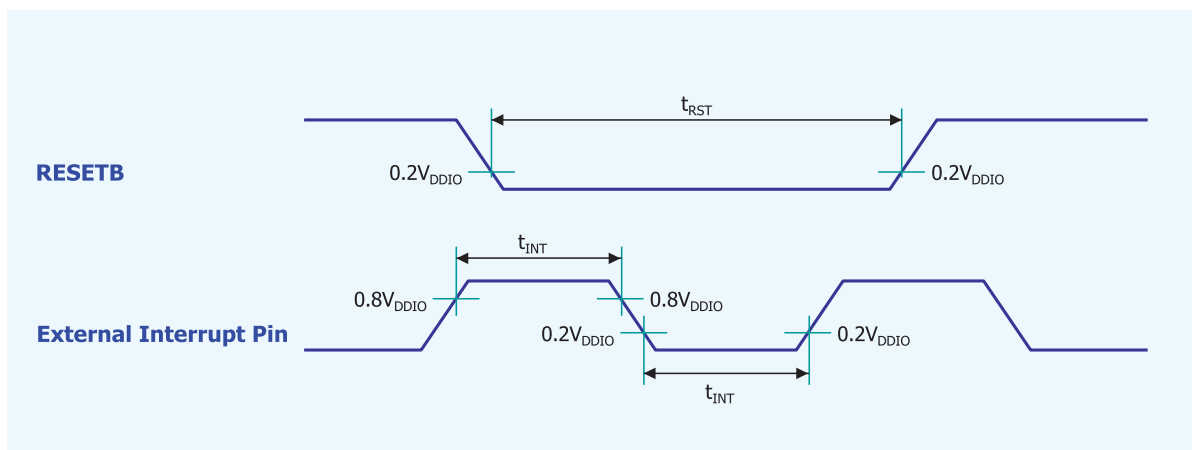
* $T_A = -40^{\circ}\text{C} \sim +85^{\circ}\text{C}$, $V_{\text{DDIO}} = 2.35\text{V} \sim 5.5\text{V}$ unless otherwise specified

Parameter	Symbol	Pin	Conditions	Value			Unit
				Min.	Typ.	Max.	
Input Low Voltage	V_{IL}	P0 ~ P6 (Except P6.6, P6.5)	$V_{\text{DDIO}} = +2.35\text{V to } +5.5\text{V}$	-0.5	-	$0.2V_{\text{DDIO}} + 0.1$	V
		P6.6, P6.5	$V_{\text{DDIO}} = +2.35\text{V to } +5.5\text{V}$	-0.5	-	$0.3V_{\text{DDIO}}$	V
Input high Voltage	V_{IH}	P0 ~ P6 (Except P6.6, P6.5)	$V_{\text{DDIO}} = +2.35\text{V to } +5.5\text{V}$	$0.2V_{\text{DDIO}} + 1.0$	-	$V_{\text{DDIO}} + 0.5$	V
		P6.6, P6.5	$V_{\text{DDIO}} = +2.35\text{V to } +5.5\text{V}$	$0.9V_{\text{DDIO}}$	-	$V_{\text{DDIO}} + 0.5$	
Output Low Voltage	V_{OL}	P0 ~ P6	$V_{\text{DDIO}} = +5.0\text{V} (I_{\text{OL}} = 8\text{mA})$ $V_{\text{DDIO}} = +3.3\text{V} (I_{\text{OL}} = 4\text{mA})$	-	-	$0.3V_{\text{DDIO}}$	V
		P0 ~ P6 (High Drive)	$V_{\text{DDIO}} = +3.3\text{V} (I_{\text{OL}} = 35\text{mA})$	-	-	$0.3V_{\text{DDIO}}$	V
Output High Voltage	V_{OH}	P0 ~ P6	$V_{\text{DDIO}} = +5.0\text{V} (I_{\text{OH}} = -12\text{mA})$ $V_{\text{DDIO}} = +3.3\text{V} (I_{\text{OH}} = -6\text{mA})$	$0.7V_{\text{DDIO}}$	-	-	V
Pull-up Resistor	R_{Pu}	P0 ~ P6	$V_{\text{DDIO}} = +5.5\text{V}$ $V_{\text{DDIO}} = +3.3\text{V}$		37.5 45		K Ω
Logical 1 to 0 Transition Current	I_{TL}	P0 ~ P6	$V_{\text{DDIO}} = 5.0\text{V} \pm 10\%$ ($V_{\text{IN}} = +1.8\text{V}$)	-	500	-	μA
Input Leakage Current	I_{IL}	P0 ~ P6	$V_{\text{IN}} = V_{\text{IH}}$ or V_{IL}	-	-	± 1	μA
Pin Capacitance	C_{IO}	All	$V_{\text{DDIO}} = +5.0\text{V}$	-	10	-	pF
Active Current	I_{DD}	V_{SS}	$V_{\text{DDIO}} = +2.35\text{V}$, $T_A = 25^{\circ}\text{C}$, $F_{\text{SYS}} = 12.5\text{MHz}$, no I/O sourcing current	-	1.5	-	mA
Sleep Current	I_{SB}	V_{SS}	$V_{\text{DDIO}} = +2.35\text{V}$, $T_A = 25^{\circ}\text{C}$, no I/O sourcing current	-	5	-	μA

7 AC Characteristics

* $T_A = -40\text{ }^{\circ}\text{C} \sim +85\text{ }^{\circ}\text{C}$, $V_{DDIO} = 2.35\text{V} \sim 5.5\text{V}$ unless otherwise specified

Parameter	Symbol	Pin	Conditions	Value			Unit
				Min	Typ	Max	
RESETB Input Width	t_{RST}	RESETB	$V_{DDIO} = 3.0\text{V} \pm 10\%$	24	-	-	F _{sys}
External Interrupt Input Width	t_{INT}	External Interrupt	$V_{DDIO} = 3.0\text{V} \pm 10\%$	4	-	-	F _{sys}



8 Analog IP Characteristics

8.1 ADC Characteristics

* TA= -40°C ~ +85°C, V_{DDIO}=2.35V ~ 5.5V unless otherwise specified

Parameter	Symbol	Conditions	Value			Unit
			Min.	Typ.	Max.	
Supply Voltage	V _{DDA}	-	2.35	-	5.5	V
Input Voltage	V _{INADC}	-	V _{SS}	-	V _{DDA}	V
Resolution	RES _{ADC}	-	-	12	-	bit
Operating Frequency	F _{ADC}	$4.5V < V_{DDA}$ $2.4V < V_{DDA} \leq 4.5V$ $2.35V < V_{DDA} \leq 2.4V$ $V_{DDA} \leq 2.35V$	-	-	24 12 6 3	MHz
Conversion Time	t _{ADC}	-	-	120 / F _{ADC}	-	Sec
Overall Accuracy	OA _{ADC}	$V_{DDA} = 5.0V, F_{ADC} = 24MHz$ $V_{DDA} = 3.3V, F_{ADC} = 12MHz$ $V_{DDA} = 2.4V, F_{ADC} = 6MHz$ $V_{DDA} = 2.35V, F_{ADC} = 3MHz$	-	±2	±4	LSB
Integral Nonlinearity	INL _{ADC}		-	±2	±4	LSB
Differential Nonlinearity	DNL _{ADC}		-	±0.5	±1	LSB
Zero Input Error	ZIE _{ADC}		-	±2	±4	LSB
Full Scale Error	FSE _{ADC}		-	±2	±4	LSB
Analog Input Capacitance	C _{INADC}	-	-	10	15	pF
Effective Number of Bits	ENOB	$2.4V \leq V_{DDA} \leq 5.0V$	9.9	-	-	BIT
ADC Active Current	I _{ADC}	$V_{DDA} = 5.0V, F_{ADC} = 24MHz$	-	2.3	3.7	mA
		$V_{DDA} = 3.3V, F_{ADC} = 12MHz$	-	0.80	1.30	
		$V_{DDA} = 2.4V, F_{ADC} = 6MHz$	-	0.26	0.46	
		$V_{DDA} = 2.35V, F_{ADC} = 3MHz$	-	0.18	0.31	

8.2 Comparator Characteristics

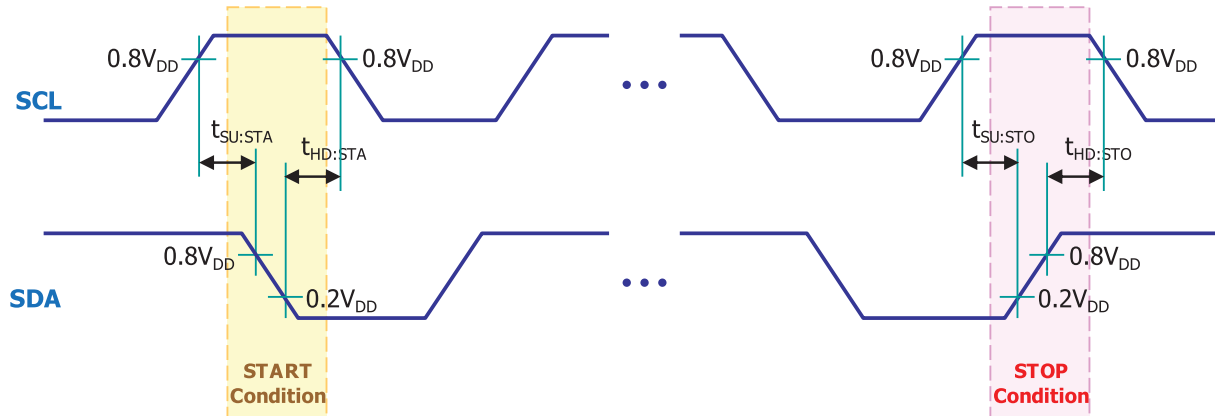
Parameter	Symbol	Conditions	Value			Unit
			Min.	Typ.	Max.	
Input Offset Voltage	$V_{\text{OFFSET_COMP}}$	$V_{\text{DDA}} = +2.5\text{V} \sim +5.0\text{V}$	-	10	40	mV
Hysteresis Voltage	$V_{\text{Hys_COMP}}$		-	20	-	mV
Response Time	$T_{\text{Rsp_COMP}}$		-	-	210	ns
Supply Current	$I_{\text{ACT_COMP}}$		-	12	16	uA
Power Down Current	$I_{\text{PD_COMP}}$		-	-	10	nA

8.3 LCD Driver Characteristics

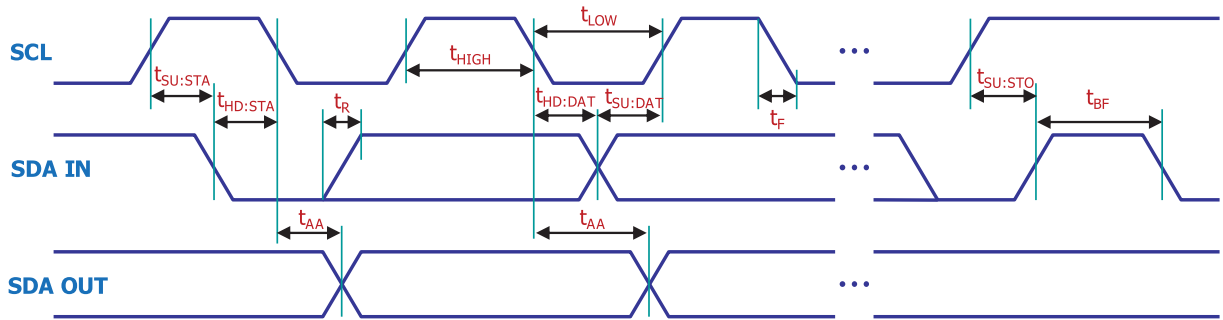
* TA= -40°C ~ +85°C, $V_{\text{DDIO}}=2.35\text{V} \sim 5.5\text{V}$ unless otherwise specified

Parameter	Symbol	Conditions	Value			Unit
			Min.	Typ.	Max.	
LCD Voltage Driving Resistor	R_{LCD}	V_{LCD3} To V_{SS} Resistance		90		$\text{K}\Omega$
LCD Voltage Reference Generation Value	V_{LCD3}	$V_{\text{DDIO}}@5.0\text{V}$ 1/3Bias, CONTRAST[4:0] = 11000, Or $V_{\text{DDIO}}@3.3\text{V}$ 1/3Bias, CONTRAST[4:0] = 01000,	3.0	-	-	V
	V_{LCD2}		2.0	-	-	V
	V_{LCD1}		1.0	-	-	V
Supply Current	I_{Sup24}	$V_{\text{DDIO}} = 2.4\text{V}$ (no load), CONTRAST[4:0] = 01000	-	30	-	uA
	I_{Sup50}	$V_{\text{DDIO}} = 5.0\text{V}$ (no load), CONTRAST[4:0] = 11000	-	40	-	uA
Output Resistance, COM/SEG	$R_{\text{OCOM/SEG}}$	CONTRAST[4:0] = 10000, $V_{\text{DDIO}}@5.0\text{V}$	-	-	55	$\text{K}\Omega$

9 I2C Timing Characteristics



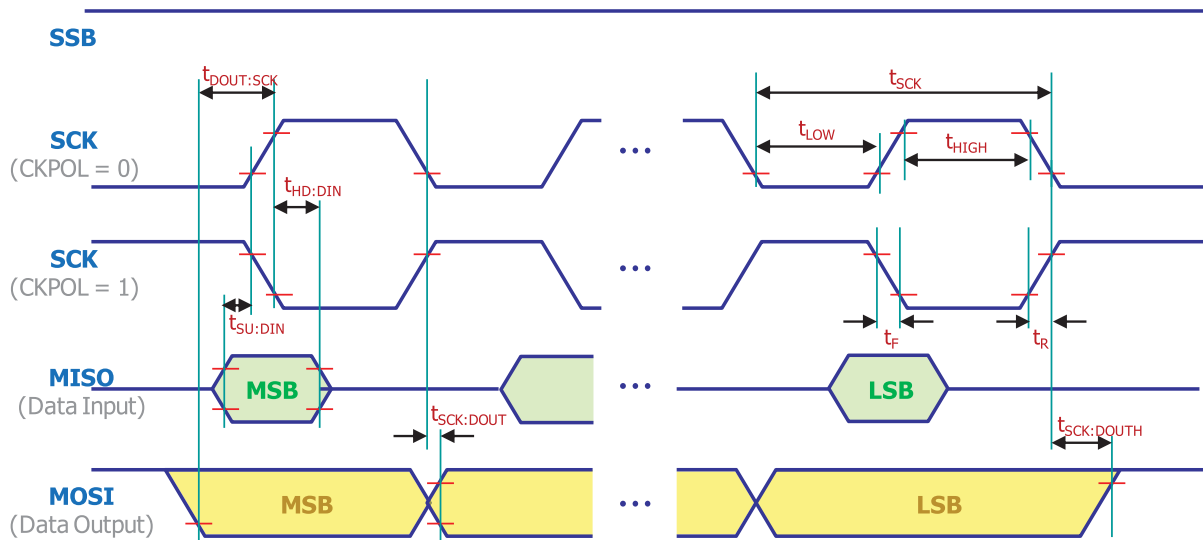
Symbol	Characteristics		Min. [ns]	Max. [ns]	Conditions
$t_{SU:STA}$	START Condition Setup Time	100kHz Mode	4,700	-	Only relevant for repeated START condition
		400kHz Mode	600	-	
$t_{HD:STA}$	START Condition Hold Time	100kHz Mode	4,700	-	After this period, the first clock pulse is generated
		400kHz Mode	600	-	
$t_{SU:STO}$	STOP Condition Setup Time	100kHz Mode	4,700	-	
		400kHz Mode	600	-	
$t_{HD:STO}$	STOP Condition Hold Time	100kHz Mode	4,700	-	
		400kHz Mode	600	-	



Symbol	Characteristics	Min. [ns]	Max. [ns]	Conditions	
t_{HIGH}	Clock High Time	100kHz Mode	4,000	-	Minimum Frequency : 1MHz
		400kHz Mode	600	-	Minimum Frequency : 5MHz
t_{LOW}	Clock Low Time	100kHz Mode	4,700	-	Minimum Frequency : 1MHz
		400kHz Mode	1,300	-	Minimum Frequency : 5MHz
$t_{SU:DAT}$	Data Input Setup Time	100kHz Mode	250	-	
		400kHz Mode	100	-	
$t_{HD:DAT}$	Data Input Hold Time	100kHz Mode	0	-	
		400kHz Mode	0	900	
t_{AA}	Data Valid from Clock	100kHz Mode	-	3,500	
		400kHz Mode	-	-	
t_{BF}	BUS Free Time	100kHz Mode	4,700	-	
		400kHz Mode	1,300	-	
t_r	SDA & SCL Rising Time	100kHz Mode	-	1,000	The Range of Cb is from 10pF to 400pF
		400kHz Mode	$2.0 + 0.1C_b$	300	
t_f	SDA & SCL Falling Time	100kHz Mode	-	300	The Range of Cb is from 10pF to 400pF
		400kHz Mode	$2.0 + 0.1C_b$	300	

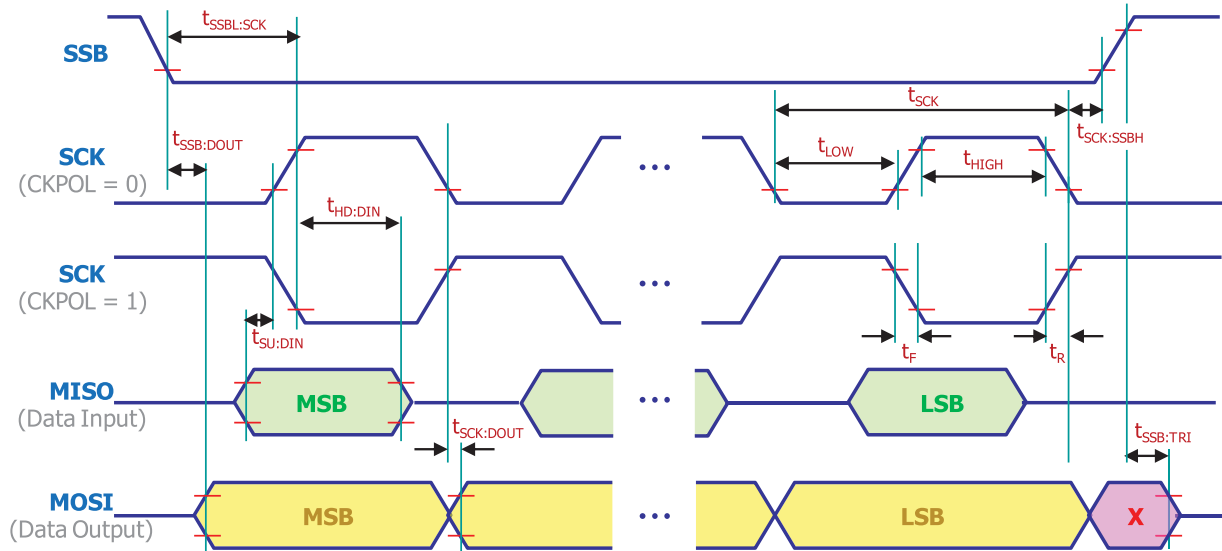
10 SPI Timing Characteristics

10.1 Master Mode



Symbol	Description	Mode	Min. [ns]	Typ. [ns]	Max. [ns]
t_{SCK}	SCK Period Time (using SFR 'SPICK')	Master	-	$F_{osc}/2 \sim F_{osc}/256$	-
t_{HIGH}, t_{LOW}	SCK High / Low	Master	-	50% Duty Cycle	-
t_F, t_R	SCK Rise / Fall Time	Master	-	3.6	-
$t_{SU:DIN}$	Data Input Setup Time	Master	-	10	-
$t_{HD:DIN}$	Data Input Hold Time	Master	-	10	-
$t_{DOUT:SCK}$	Data Output to SCK	Master	-	$0.5 \times t_{SCK}$	-
$t_{SCK:DOUT}$	SCK to Data Output	Master	-	10	-
$t_{SCK:DOUTH}$	SCK to Data Output High	Master	-	10	-

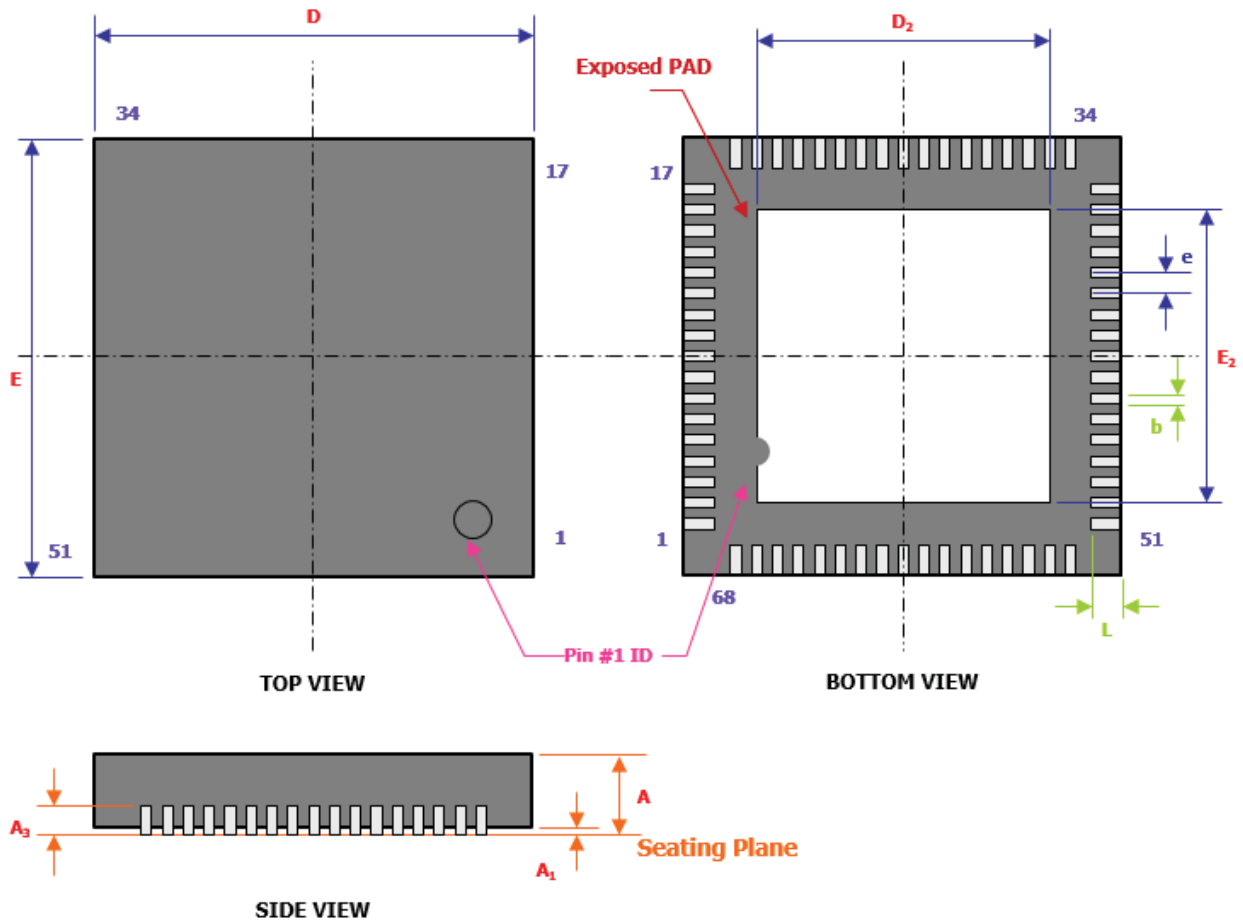
10.2 Slave Mode



Symbol	Description	Mode	Min. [ns]	Typ. [ns]	Max. [ns]
$t_{SSB:DOUT}$	SSB Low to Data Output	Slave	-	15	-
T_{SCK}	SCK Period Time	Slave	$4 \times t_{sys}$	-	-
t_{HIGH}, t_{LOW}	SCK High / Low	Slave	$2 \times t_{sys}$	-	-
t_F, t_R	SCK Rise / Fall Time	Slave	-	1,600	-
$t_{SU:DIN}$	Data Input Setup Time	Slave	10	-	-
$t_{HD:DIN}$	Data Input Hold Time	Slave	t_{sys}	-	-
$t_{SCK:DOUT}$	SCK to Data Output	Slave	-	15	-
$t_{SCK:SSBH}$	SCK to SSB High	Slave	20	-	-
$t_{SSB:TRI}$	SSB High to Tri-state	Slave	-	10	-
$t_{SSBL:SCK}$	SSB Low to SCK	Slave	20	-	-

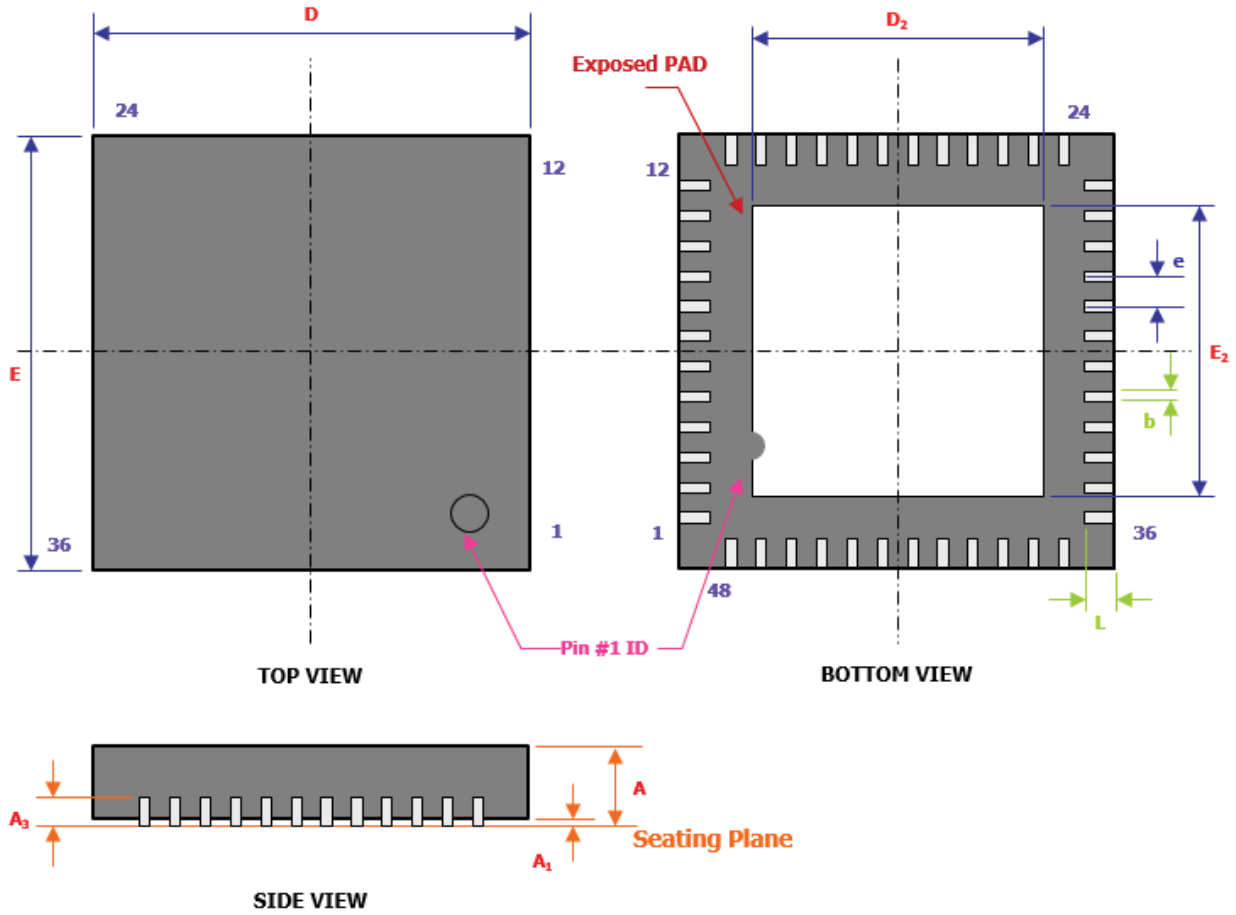
11 Package Dimension

11.1 QFN 68 Pin



Symbol	Dimensions [mm]		
	Min.	Nom.	Max.
A	0.80	0.85	0.90
A ₁	0.00	0.02	0.03
A ₃	0.20		
b	0.15	0.20	0.25
D	8.00		
D ₂	4.50	4.60	4.70
E	8.00		
E ₂	4.90	5.00	5.10
e	0.40		
L	0.35	0.40	0.45

11.2 QFN 48 Pin



Symbol	Dimensions [mm]		
	Min.	Nom.	Max.
A	0.80	0.85	0.90
A_1	0.00	0.02	0.03
A_3	0.20		
b	0.15	0.20	0.25
D	6.00		
D_2	4.50	4.60	4.70
E	6.00		
E_2	4.50	4.60	4.70
e	0.40		
L	0.35	0.40	0.45

12 Revision History

Date	Revision	History
Mar-2021	1.0	Preliminary release
Mar-2021	1.1	Spec Sheet on GC801 separated document from GC800
Jun-2022	1.2	Corrected errors in 4. Pin Description

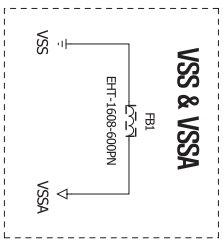
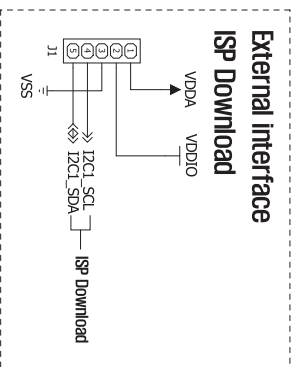
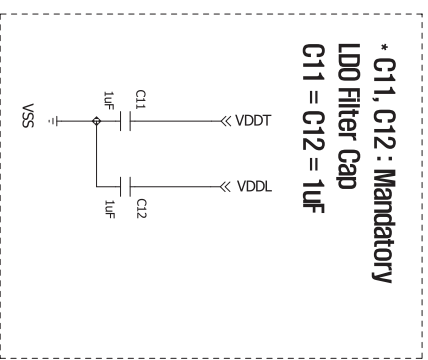
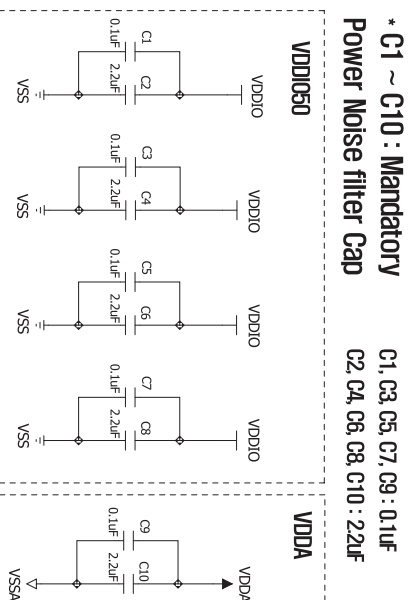
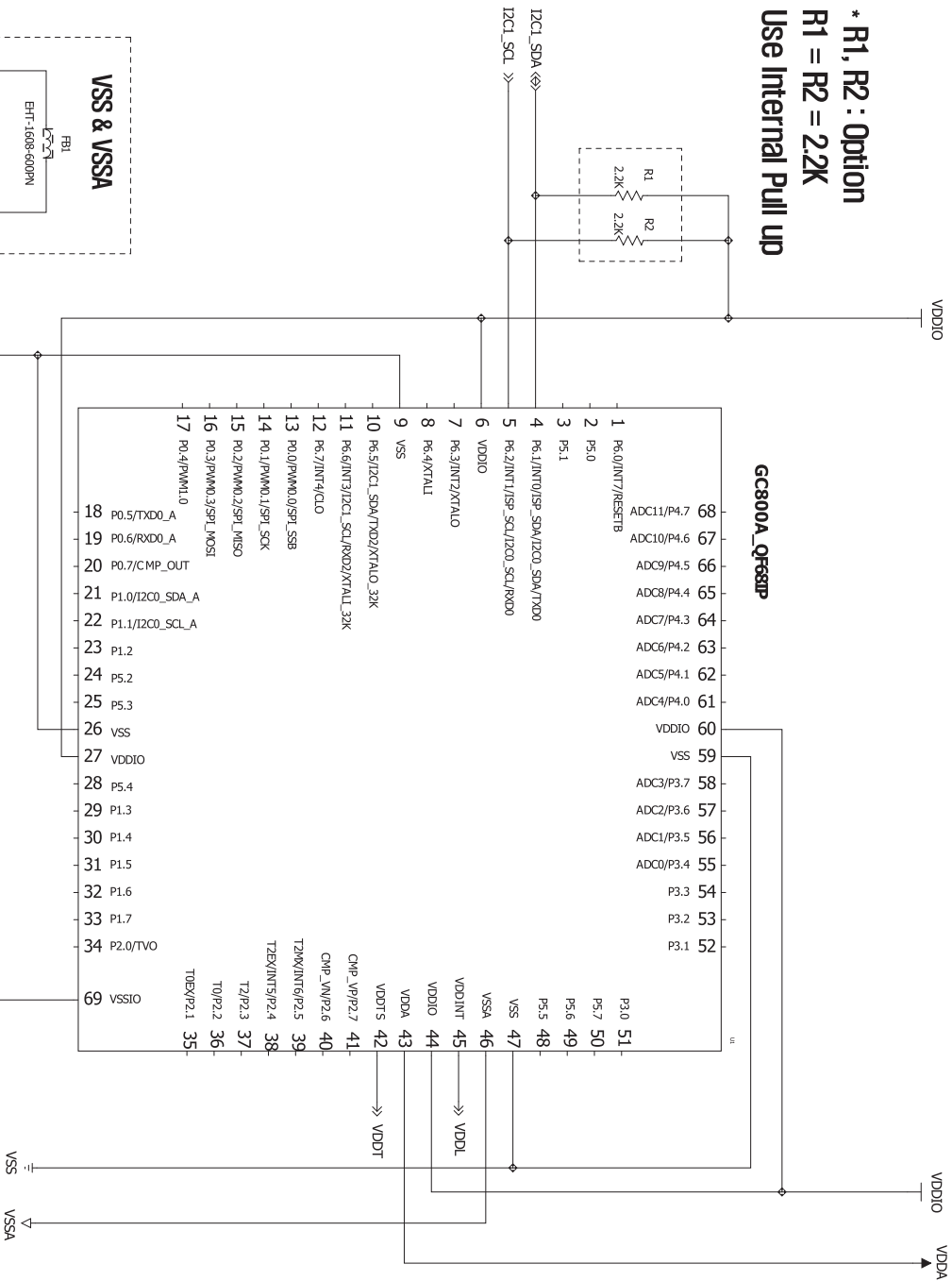
GC800A – QF681P

Body Size : 8mm x 8mm

»»VDDIO [Operating Voltage] : +2.35V to +5.5V

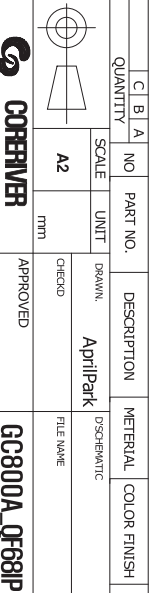
* R1, R2 : Option
 R1 = R2 = 22K

Use Internal Pull UP



NO.	REVISION NO.	NO.	REVISION NO.
1			
2			

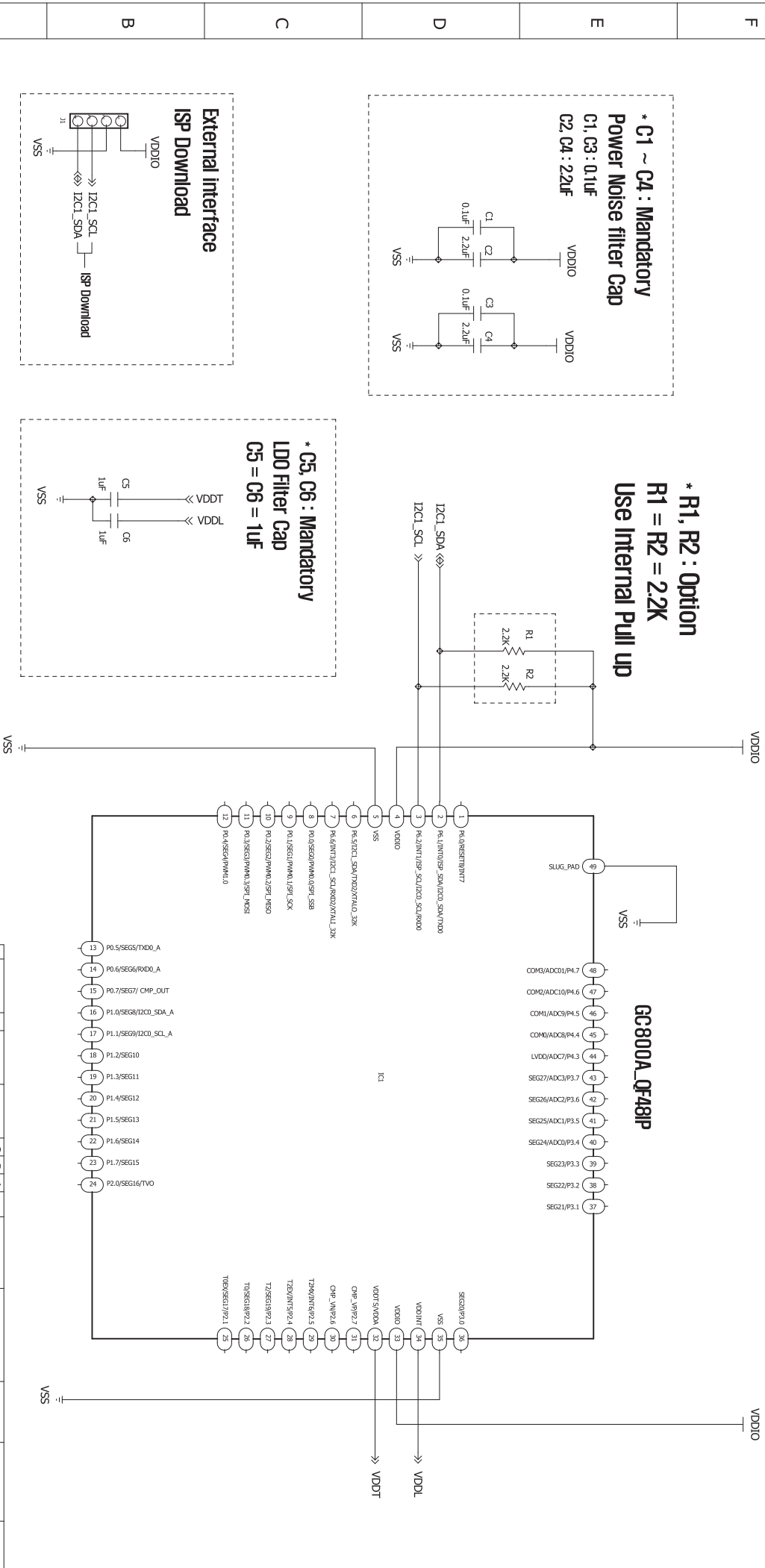
C	B	A	NO.	PART NO.	DESCRIPTION	MATERIAL	COLOR FINISH	NOTE
SCALE	A2	UNIT	MM	DRAWN	AprilPark	DSCHEMATIC		
CHECKED					FILE NAME			
APPROVED								



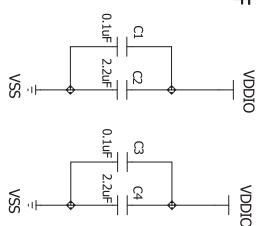
GC800A – QF48IP

Body Size : 6mm X 6mm

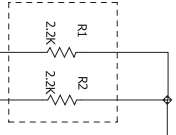
>>VDDIO [Operating Voltage] : +2.35V to +5.5V



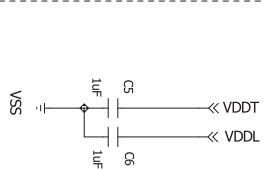
* C1 ~ C4 : Mandatory
Power Noise filter Cap
C1, C3 : 0.1uF
C2, C4 : 2.2uF



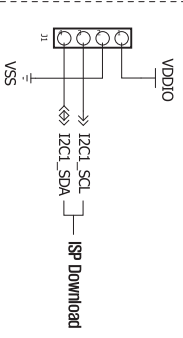
* R1, R2 : Option
R1 = R2 = 2.2K
Use Internal Pull up



* C5, C6 : Mandatory
LDO Filter Cap
C5 = C6 = 1uF



External interface
ISP Download



NO.	REVISION NO.	NO.	REVISION NO.	C	B	A	NO.	PART NO.	DESCRIPTION	MATERIAL	COLOR FINISH	NOTE
1												
2												

QUANTITY	SCALE	UNIT	DRAWN	CHECKED	APPROVED
	A2	MM			

FILE NAME	DSCHEMATIC
	AprilPark

GC800A_QF48IP



GC800A_QF48IP